

Welcome to the

POWELL HEREFORDS

25TH ANNUAL PRODUCTION SALE

BUILDING BETTER BEEF



WITH POWELL HEREFORD GENETICS.

Six Mile Ranch Ft. McKavett, Texas

11:30 Lunch 12:30 Sale

(Located 25 Miles East of Eldorado on HWY. 190)

POWELL HEREFORDS

25TH ANNUAL PRODUCTION SALE
TUESDAY, OCTOBER 11, 2022

Selling 200 Head
100 Hereford Bulls
100 Powell Ranch Raised Heifers

Auctioneer - Doak Lambert, Decatur, TX (972)-839-6485

SALE REPRESENTATIVES

Jack WardExec. V.P., American Hereford Assoc.
Larry Johnson..... President, Texas Hereford Assoc.
Sydney Howell.....Mgr., Texas Hereford Assoc., 817-831-3161
Colton PratzAHA/Hereford World, 405-385-1054
Tom JohnsonJohnson Cattle Marketing, 817-291-5121
E.C. Larkin.....Gulf Coast Cattleman
Phil Stoll & Ralph Means.....Weekly Livestock Reporter
Gabrielle Harris.....Texas & Southwestern Cattle Raisers Assn.

Sale Catalog PHOTOGRAPHY provided by Tom Johnson
817-291-5121

Sale Catalog DESIGN & PUBLICATION by Live Design
325-949-7768

Additional Photography provided by Tori Williams
325-853-5129

Veterinarian - William Edmiston, Eldorado Animal Clinic
325-853-2572

Sonagram Information - Casey Worrell
The Rancher's Resource - 830-864-5161

TERMS AND CONDITIONS

Terms: Cash

Each bull is the property of the last bidder when sold. If necessary, bulls will be taken care of for a reasonable length of time after the sale at the buyer's risk.

All animals of breeding age are guaranteed breeders.
Customary guarantees will apply.

Health certificates and brand clearances will be available.
All cattle will meet requirements to go anywhere.

The auctioneer will settle all bidding disputes.

All persons who attend this sale do so at their own risk. Owners assume no liability, legal or otherwise, for any accidents which may occur.

If you can not make the sale, you may send or call in your bidding instructions. Your bids will be handled as directed and in your best interest.

SALE DAY PHONE NUMBER: 325-853-2202

James L. Powell • Arthur Uhl • James Uhl

36 W. Beauregard, Ste. 301, San Angelo, TX 76903

Office: (325) 653-1688

www.powellranches.com • powellranches@gmail.com

David Neal, Ranch Manager (325) 456-0669 • Britt Mynatt, Herd Manager (325) 853-2202

JOHNSON
Cattle Marketing
Tom Johnson, Sale Mgr.
(817) 291-5121

Dear Friends,

Welcome to our Annual Production Sale. Our primary goal at Powell Herefords is optimum beef production. Since 1954 we have worked to develop cattle with high growth traits, excellent fertility, strong muscling and good disposition. We believe our customers should have bulls and heifers that can be counted on to perform reliably in range conditions and to provide consistent top quality offspring. In our commercial Angus herd we have developed feeder cattle with exceptional performance that meet specifications for both Certified Hereford Beef and Certified Angus Beef programs. We believe you will be pleased with these cattle. Please join us at the ranch on Tuesday, October 11th for lunch, fellowship, and an opportunity to purchase some exceptional bulls and heifers.

Sincerely,


James L. Powell


Arthur Uhl


James Uhl



SIX MILE RANCH



SALE DAY PHONE NUMBER: 325-853-2202



HOW TO PARTICIPATE AS AN ABSENTEE BUYER

We have made preparations to bid and buy for Powell Herefords through Superior Productions' "Call or Click-To-Bid" service for those unable to attend in person on sale day.

Please note that all of the lots in the sale will also be available for viewing online prior to sale day at www.superiorlivestock.com.

HERE'S HOW IT WORKS

Turn in Bids Over the Phone. This is our traditional method of buying livestock. To get started simply go online to www.superiorlivestock.com and click on the tab titled "REGISTER FOR A BUYER NUMBER". Select the registration form for Superior Productions and print the registration form, fill it out and fax it in to Superior Productions at (817) 378-3380 with a signature on it, or scan and email the form to info@superiorauction.com. You can also mail it in to the address provided on the form. Upon receipt of this information Superior will call you with a buyer's number and the bid line phone number that you will use on sale day to place bids over the phone.

Click-To-Bid. This is Superior's online bidding platform for cattle buying. Please note that high speed internet is required – this is not for dial-up or satellite internet. Registration is free, but you must become a member of www.superiorclicktobid.com to sign up. Becoming a member is easy – just go to the homepage of www.superiorclicktobid.com and follow the out-lined steps to get started. Input your information and select a username and password. You will receive an e-mail confirming you are a member. From that point forward you just have to sign in and select the sale you would like to register for and once approved you will receive an e-mail confirming which sale you are now registered for.

Viewing the Auction. There are 2 places to view the sale broadcast live on the internet: www.superiorlivestock.com or www.superiorclicktobid.com. Just go to the home page of either website and select the auction. If you just want to watch the auction on your computer, smartphone or tablet go to www.superiorlivestock.com, but if you want to bid over the computer you must go to www.superiorclicktobid.com. Remember you can call in to bid on the internet, but you must be a member of www.superiorclicktobid.com to "click-to-bid". Your computer must have Flash Media Player installed for this website to view the auction. If you have any questions, please call the Superior Productions office at 800-431-4452.

*If you plan to bid by phone through Superior Livestock or 'Click-to-Bid', you must register at www.superiorlivestock.com prior to bidding.

BIDDERS WHO ARE SUCCESSFUL IN MAKING PURCHASES WILL BE CONTACTED BY POWELL HEREFORD AFTER THE SALE TO SETTLE PAYMENT AND DISCOVER YOUR SHIPPING PLANS.



WHY SHOULD YOU CHOOSE SILVEUS DROUGHT INSURANCE?

Because only Silveus Drought Insurance Specialists have access to RangeCalc. Developed by Silveus, this software analyzes 73 years of National Weather Service rainfall data, to help us determine when drought risk is highest in your area. We then custom-build a drought insurance policy that gives you maximum coverage at minimal cost. From rangeland to pasture to forage, Silveus drought insurance not only saves your profits, we save you money.

Sign-Up Prior to November 15th, 2022.
Sign-Up any or all of your grazing land or hay land.
Recent changes NOW allow for New Mexico ranches to be eligible for the rainfall index policy.

Give me 30 minutes and I will show you the dramatic difference Silveus makes. Contact:

Steve King

Graham, TX

940-550-8820 (cell)





Kubota
DEALER

Angelo Pellets, Inc.
Feed Mill www.angelopellets.com

Cody L. Cauley

**1111 N. Bell St.
San Angelo, Texas 76903**

**Office: 325-655-5751
1-800-447-5388**

**Mobile: 325-234-9995
Fax: 325-653-9716**

email: codycauley@suddenlink.com



- ANTIFREEZE
- AVIATION OIL
- BRAKE CLEANER
- ENVIRONMENTAL OIL
- GEAR OIL
- GREASE
- RED HYDRAULIC OIL
- SYNTHETIC TRANSMISSION FLUID



325.656.7912

**5655 CHRISTOVAL RD
SAN ANGELO, TEXAS 76904**



**NEW & USED EQUIPMENT
SALES, SERVICE, & PARTS**

HENDERSONCONTRACTOR.COM



SWLM

Southwestern Livestock Mineral Co.

*Your professional source for custom
livestock minerals, vitamins and premixes.*

202 West 4th Street
San Angelo, Texas 76903

325-655-1430 • 1-800-777-0232

www.swlm.com



- ANTIFREEZE
- AVIATION OIL
- BRAKE CLEANER
- BRAKE FLUID
- CARB CLEANER
- DIESEL EXHAUST FLUID (DEF)
- DIESEL OIL
- ENGINE OIL
- ENVIRONMENTAL OIL
- GEAR OIL
- GREASE
- HI-TEMP GREASE
- HUB OIL
- HYDRAULIC OIL
- KEROSENE
- NAPHTHA
- RAILROAD DIESEL OIL
- RED HYDRAULIC OIL
- SYNTHETIC TRANSMISSION FLUID
- SYNTHETIC GREASE
- SYNTHETIC OIL
- TRANSMISSION FLUID
- TURBINE OIL
- WAYLUBE



BULK FUEL DELIVERY:

- CLEAR DIESEL
- DYED DIESEL
- GASOLINE (ALL GRADES)

FAMILY- OWNED AND OPERATED SINCE 1981



CONTACT US TODAY TO LEARN HOW WE CAN BECOME YOUR ONE STOP SHOP FOR ALL YOU FUEL AND LUBRICANT NEEDS!

424 N. MAIN ST., SAN ANGELO, TX 76903
SALES@REGALOIL.NET || WWW.REGALOILINC.COM

(325) 658-7521

Southwestern Wool & Mohair

**Eden, Texas
325-869-8011**

Feed & Supplies



Proudly Serving West Texas Since 1953.

Treating
Children and Adults
through:
Audiology
Employer Services
Orthotics/Prosthetics
Physical Therapy
Occupational Therapy
Speech Therapy
Family Support
Services
Hospice Care



Abilene 325.793.3400
Ozona 325.392.9872
San Angelo 325.223.6300



SCAN ME

To find out about ALL the Great
Things Happening Here Every Day!

**A special thank you to the
Powell Family for your continuous
generosity and support of
Round Up for Rehab**



West Texas Boys Ranch is a non-profit organization offering guidance, structure and opportunities through a family-based program and Christian environment so young men may realize their greatest potential.

Since its inception 75 years ago, West Texas Boys Ranch has served thousands of boys from Texas and beyond.

At West Texas Boys Ranch a boy is measured by his potential rather than his past. It's here in a family setting and ranch environment where boys rediscover their self-respect and become useful, proud, and productive citizens.

West Texas Boys Ranch is a place where boys learn the value of work, grow spiritually, and achieve academic success through the example of a caring staff.



Zach showing off one of his buckles that he won this summer at the WTBR Ranch Rodeo.

10223 Boys Ranch Rd.
San Angelo, TX
76904-36655
325-949-1936
www.wtbr.org

*Zach placed first in Team Penning,
Team Sorting and Goat Dressing.*

HERD SIRES

A

JP 334 DOM 6306

Calved: Sep. 22, 2016 Tattoo: 6306 Reg. #43749973

| | | |
|--------------------|-----------------------------------------------|-----------------------------------------------------------------------------------------------------------------------------------------------------------------------------------------------------------|
| JSS Domino 334 | { CL 1 Domino 955W { H Lady Ranchers 9040 | { CL 1 Domino 637S 1ET { CL 1 Dominette 5152R { Churchill Rancher 592R { Churchill Lady 3175 { CJH Harland 408 { RCR Aurum DOMET 00071 { KB Mister Domino 412P { JP Miss DOM 3L 1129 |
| JP MS Harland 4561 | { RCR 977 Harland ET { JP MS 412P DOM 7730 | { RCR Aurum DOMET 00071 { KB Mister Domino 412P { JP Miss DOM 3L 1129 |

•EPDs - BW +0.8 WW +61 YW +103 Milk +26 M&G +56

B

JP HARLAND 8076

Calved: Jan. 13, 2018 Tattoo: 8076 Reg. #43904984

| | | |
|-------------------------|--------------------------------------------------|----------------------------------------------------------------------------------------------------------------------------------------------------------------------------------------------|
| JP Harland 4636 | { RCR 977 Harland ET { JP MS Silver BRIT 5598 | { CJH Harland 408 { RCR Aurum Domet 00071 { OH SIL DOM 930 { JP L1 Dominette 0613 { K 64H Ribstone LAD 157K { F Extra Lass318 { JP 1 Domino 3913 { JP MS Aurum DOM 6885 |
| JP MS 753 Ribstone 3155 | { F 157K Ribstone 753 { JP MS 3913 DOM 9481 | { K 64H Ribstone LAD 157K { F Extra Lass318 { JP 1 Domino 3913 { JP MS Aurum DOM 6885 |

•EPDs - BW +3.8 WW +61 YW +109 Milk +16 M&G +46

C

JP ADVANCE 4501

Calved: Jan. 02, 2014 Tattoo: 4501 Reg. #43466638

| | | |
|------------------------|----------------------------------------------|-------------------------------------------------------------------------------------------------------------------------------------------------------------------------------------------------------|
| IMR Advance 7005 4ET | { HHAdvance 492D { IMR C61 MS 5004 2ET | { HHAdvance 185A { HH Miss Advance 063Z { Star Advance C61 1ET { IMR Dominette 0033 { H5 408 Domino 7100 { UU MS Oregon 7186 { L Star Pure Gold L132 5ET { JP 927 Dominette 2567 |
| JP MS 9166 Harley 2089 | { UU Harley 9166 { JP Miss Gold Star 5627 | { H5 408 Domino 7100 { UU MS Oregon 7186 { L Star Pure Gold L132 5ET { JP 927 Dominette 2567 |

•EPDs - BW -0.3 WW +51 YW +77 Milk +27 M&G +52

D

UU SWAGGER 8107F

Calved: Feb. 10, 2018 Tattoo: 8107 Reg. #43902467

| | | |
|-----------------|-------------------------------------------|----------------------------------------------------------------------------------------------------------------------------------------------------------------------------------------|
| SR DIABLO 1095C | { SR INDIGO 1181Y { SR DOODLES 849 | { UPS INDIGO 8648 { SR SHANA 3107 { CHURCHILL YANKEE ET { PH SILVER BELLE 8674 { CJH Harland 408 { H5 MS 001 Domet 4193 { C PURE GOLD 4123 { UU MS GENERATOR 1006 |
| UU HALEY 2041 | { H5 408 Domino 7100 { UU MS GOLD 0112 | { CJH Harland 408 { H5 MS 001 Domet 4193 { C PURE GOLD 4123 { UU MS GENERATOR 1006 |

•EPDs - BW +2.8 WW +57 YW +89 Milk +36 M&G +64

E

H WR 177R DOMINO 4065ET

Calved: Jan. 28, 2014 Tattoo: 4065 Reg. #43482049

| | | |
|-------------------|---------------------------------------------|-------------------------------------------------------------------------------------------------------------------------------------------------------------------------------|
| GBL1 Domino 177R | { GBL1 Domino 8143M { GBL1 DOM PRCS 690K | { GBL1 Domino 534J { GBL1 DOM PRCS 5115J { GBL1 Domino 175E { GBL1 DOM PRCS 152E { HH Advance 9070J { CL 1 Dominette 857H { B Starfire 61 { K&B IDA 7733 |
| K&B Lynn DOM 4096 | { CL1 Domino 1181L { K&B Stardust 0231K | { CL 1 Domino 1181L { K&B Stardust 0231K { B Starfire 61 { K&B IDA 7733 |

•EPDs - BW +3.7 WW +74 YW +13 Milk +19 M&G +56

F

H ADVANCE 6441 ET

Calved: Aug 21, 2016 Tattoo: 6441 Reg. #43748524

| | | |
|-------------------------|-------------------------------------------------|----------------------------------------------------------------------------------------------------------------------------------------------------------------------------------------------------------|
| HH Advance 4075B ET | { HHAdvance 1013Y ET { HH Miss Advance 0121X | { HHAdvance 4055P { HH Miss Advance 7003T { HH Advance 8203U ET { HH Miss Advance 7050T { CL 1 Domino 637S 1ET { CL 1 Dominette 5152R { CL 1 Domino 9126J 1ET { CL 1 Dominette 974J |
| CL1 Dominette 1169Y 1ET | { CL 1 Domino 955W { CL 1 Dominette 440P 1ET | { CL 1 Domino 637S 1ET { CL 1 Dominette 5152R { CL 1 Domino 9126J 1ET { CL 1 Dominette 974J |

•EPDs - BW -0.8 WW +39 YW +62 Milk +17 M&G +37

G

MCC ADVANCE 703

Calved: Apr 09, 2017 Tattoo: 703 Reg. #43795883

| | | |
|---------------------|--------------------------------------------------|-------------------------------------------------------------------------------------------------------------------------------------------------------------------------------------------------------|
| HH Advance 4075B ET | { HHAdvance 1013Y ET { HH Miss Advance 0121X | { HHAdvance 4055P { HH Miss Advance 7003T { HH Advance 8203U ET { HH Miss Advance 7050T { C -S Pure Gold 98170 { /S Lady Peerless 180L { CL 1 Domino 2136M { HH MS Advance 8037H |
| H Tiffany 3035 ET | { H Payback 807 ET { HH Miss Advance 5139R ET | { C -S Pure Gold 98170 { /S Lady Peerless 180L { CL 1 Domino 2136M { HH MS Advance 8037H |

•EPDs - BW +2.9 WW +50 YW +74 Milk +13 M&G +38

H

JP 334 DOM 8083

Calved: Jan 28, 2018 Tattoo: 4065 Reg. #43482049

| | | |
|----------------------|--------------------------------------------------|---------------------------------------------------------------------------------------------------------------------------------------------------------------------------------------------------------------|
| JSS DOMINO 334 | { CL 1 Domino 955W { -I Lady Rancher 9040 | { CL 1 Domino 637S 1ET { CL 1 Dominette 5152R { Churchill Rancher 592R { Churchill Lady 3175 { TBH Goldfinger 101 { JP MS Domino 804 7030 { PMH Star Donald 927 3ET { JP MD Advance 0852 |
| JP Mrs Gold DOM 3161 | { JP Glodfinger 5638 { JP Star Dominette 5534 | { TBH Goldfinger 101 { JP MS Domino 804 7030 { PMH Star Donald 927 3ET { JP MD Advance 0852 |

•EPDs - BW +4.3 WW +56 YW +91 Milk +27 M&G +56

2022 POWELL HEREFORDS SALE BULLS

1

JP 6306 DOM 1056

Calved: Jan. 04, 2021 Tattoo: 1056 Reg. #44249096

- | | | | | |
|------------------------|---|--------------------------|---|---------------------|
| JP 334 DOM 6306 | { | JSS Domino 334 | { | CL1 Domino 955W |
| | | JP MS Harland 4561 | { | H Lady Rancher 9040 |
| JP MS 3041 DOMINO 5196 | { | C 105Y Dom 3041 | { | RCR 977 Harland ET |
| | | JP MS 9009 Ribstone 2009 | { | JP MS 412P Dom 7730 |
| | | | { | CL 1 Domino 105Y |
| | | | { | C H2 Lady 0028 |
| | | | { | C Ribstone 9009 |
| | | | { | JP MS Mark Dom 9461 |

•EPDs - BW +1.6 WW +58 YW +93 Milk +33 M&G +62
REA 13.16 %Fat 4.22



LOT 1 · JP 6306 DOM 1056

JP 6306 DOM 1102

Calved: Jan. 14, 2021 Tattoo: 1102 Reg. #44249429

- | | | | | |
|------------------------|---|--------------------|---|------------------------|
| JP 334 DOM 6306 | { | JSS Domino 334 | { | CL 1 Domino 955W |
| | | JP MS Harland 4561 | { | H Lady Rancher 9040 |
| JP MS HARLAND DOM 7138 | { | JP Harland 4669 | { | RCR 977 Harland ET |
| | | JP MS Golden 9495 | { | JP MS 412P Dom 7730 |
| | | | { | RCR 977 Harland ET |
| | | | { | JP MS James Dom 0320 |
| | | | { | JP Goldfinger 5538 |
| | | | { | JP 6017 Dominette 4263 |

•EPDs - BW +2.2 WW +60 YW +95 Milk +25 M&G +55
REA 13.10 %Fat 3.90



LOT 2 · JP 6306 DOM 1102

14

3

JP 8083 DOM 1091

Calved: Jan. 11, 2021 Tattoo: 1091 Reg. #44249432

- | | | | | |
|-------------------------|---|-----------------------|---|------------------------|
| JP 334 DOM 8083 | { | JSS Domino 334 | { | CL 1 Domino 955W |
| | | JP MRS Gold Dom 3161 | { | H Lady Rancher 9040 |
| JPMS 2206 RIBSTONE 7140 | { | JP 9009 Ribstone 2206 | { | JP Goldfinger 5638 |
| | | JP MS Golden 1522 | { | JP Star Dominette 5534 |
| | | | { | C Ribstone 9009 |
| | | | { | JP MS Gold Dom 8603 |
| | | | { | JP Goldfinger 5538 |
| | | | { | JP Sandy 4290 |

•EPDs - BW +4.2 WW +51 YW +83 Milk +29 M&G +54
REA 16.43 %Fat 3.41



LOT 3 · JP 8083 DOM 1091

4

JP 4065 DOM 1072

Calved: Jan. 07, 2021 Tattoo: 1072 Reg. #44248815

- | | | | | |
|-------------------------|---|------------------------|---|---------------------------|
| HWR 177R Domino 4065ET | { | GB L1 Domino 177R | { | GB L1 Domino 8143M |
| | | K&B Lynn Dom 4096 | { | GB L1 Dom PRCS 690K |
| JP MS 750 Standard 0233 | { | CTY High Standard 750T | { | CL 1 Domino 1181L |
| | | JP MS Aurum 6728 | { | K&B Stardust 0231K |
| | | | { | LCI 157K Ribstone 4P |
| | | | { | Courtney Lass N338 |
| | | | { | RCR Aurum Domino MT 01030 |
| | | | { | JP MS LAD 8320 |

•EPDs - BW +3.2 WW +61 YW +92 Milk +22 M&G +53
REA 14.41 %Fat 3.45



15

5

JP 8083 DOM 1126

Calved: Jan. 18, 2021 Tattoo: 1126 Reg. #44249193

- | | | | | |
|-------------------------|---|-----------------------|---|------------------------|
| JP 334 DOM 8083 | { | JSS Domino 334 | { | CL 1 Domino 955W |
| | | JP MRS Gold Dom 3161 | { | HLady Rancher 9040 |
| JP MS2206 RIBSTONE 7107 | { | JP 9009 Ribstone 2206 | { | JP Goldfinger 5638 |
| | | JP MS 8099 Mom 4573 | { | JP Star Dominette 5538 |
| | | | { | C Ribstone 9009 |
| | | | { | JP MS Gold Dom 8603 |
| | | | { | UU Mister 8099 |
| | | | { | JP MS Solid Gold 0279 |

•EPDs - BW +2.2 WW +48 YW +81 Milk +30 M&G +54
REA 14.22 %Fat 3.20

6

JP 4065 DOM 1095

Calved: Jan. 12, 2021 Tattoo: 1095 Reg. #44248883

- | | | | | |
|-------------------------|---|--------------------|---|-----------------------|
| HWR 177R Domino 4065 ET | { | GB L1 Domino 177R | { | GB L1 Domino 8143M |
| | | K&B Lynn Dom 4096 | { | GB L1 Dom PRCS 690K |
| JP MS GOLD DOM 0336 | { | JP Goldfinger 5638 | { | CL1 Domino 1181L |
| | | JP Mark Donna 0723 | { | K&B Stardust 0231K |
| | | | { | TBH Goldfinger 101 |
| | | | { | JP MS Domino 804 7030 |
| | | | { | ORE Mark Donald 7056 |
| | | | { | JP Star Lass X7897 |

•EPDs - BW +5.5 WW +63 YW +94 Milk +24 M&G +56
REA 13.43 %Fat 3.37



LOT 6 · JP 4065 DOM 1095

7

JP 4065 DOM 1129

Calved: Jan. 22, 2021 Tattoo: 1129 Reg. #44249445

- | | | | | |
|-------------------------|---|-----------------------|---|---------------------|
| HWR 177R Domino 4065 ET | { | GB L1 Domino 177R | { | GB L1 Domino 8143M |
| | | K&B Lynn Dom 4096 | { | GB L1 Dom PRCS 690K |
| JP MS 334 DOM 7226 | { | JSS Domino 334 | { | CL 1 Domino 1181L |
| | | JP MS 8426 Aurum 1507 | { | K&B Stardust 0231K |
| | | | { | CL 1 Domino 955W |
| | | | { | H Lady Rancher 9040 |
| | | | { | JP Aurum Dom 8426 |
| | | | { | JP Miss Lad 8404 |

•EPDs - BW +5.1 WW +69 YW +104 Milk +22 M&G +56
REA 13.41 %Fat 3.77



LOT 7 · JP 4065 DOM 1129

8

JP 8076 HARLAND 1086

Calved: Jan. 10, 2021 Tattoo: 1086 Reg. #44249444

- | | | | | |
|--------------------|---|-------------------------|---|------------------------|
| JP HARLAND 8076 | { | JP Harland 4636 | { | RCR 977 Harland ET |
| | | JP MS 753 Ribstone 3155 | { | JP MS Silver Brit 5598 |
| JP MS ADVANCE 7212 | { | JP Advance 4501 | { | F 157K Ribstone 3155 |
| | | JP MS 750 Standard 0233 | { | JP MS 3913 Dom 9481 |
| | | | { | IMR Advance 7005 4ET |
| | | | { | JP MS 9166 Harley 2089 |
| | | | { | CTY High Standard 750T |
| | | | { | JP MS Aurum 6728 |

•EPDs - BW +3.7 WW +58 YW +101 Milk +20 M&G +49
REA 12.52 %Fat 3.49



9

JP 8083 DOM 1048

Calved: Jan. 02, 2021 Tattoo: 1048 Reg. #44249067

- JP 334 DOM 8083 { JSS Domino 334 { CL 1 Domino 955W
H5 MS 752 Domet 041
- JP Mrs Gold Dom 3161 { H5 408 Domino 7100
UU MS ADV 5170 9053
- JPMS HARLAND GOLD 5000 { RCR 3027 Gold Harland 12020 { UPS Domino 3027
RCR 996 Miss Gold Harland ET
- JP MS 8712 Dom 3063 { UU Mister 8099
JP MS Aurum Dom 7522

•EPDs - BW +2.8 WW +47 YW +76 Milk +26 M&G +50
REA 16.94 %Fat 4.06



LOT 9 · JP 8083 DOM 1048

10

JP 8083 DOM 1074

Calved: Jan. 07, 2021 Tattoo: 1074 Reg. #44249157

- JP 334 DOM 8083 { JSS Domino 334 { CL 1 Domino 955W
H Lady Rancher 9040
- JP MRS Gold Dom 3161 { JP Goldfinger 5638
JP Star Dominette 5534
- JP MS 3063 DOMINO 6166 { H Domino 3063 ET { CL 1 Domino 955W
HH Miss Advance 5139R ET
- JP MS 8426 Aurum 3203 { JP Aurum Dom 8426
JP MS Robin Dom 9470

•EPDs - BW +3.5 WW +58 YW +93 Milk +29 M&G +59
REA 14.62 %Fat 3.44



LOT 10 · JP 8083 DOM 1074

11

JP 8083 DOM 1083

Calved: Jan. 09, 2021 Tattoo: 1083 Reg. #44249069

- JP 334 DOM 8083 { JSS Domino 334 { CL 1 Domino 955W
H Lady Rancher 9040
- JP MRS Gold Dom 3161 { JP Goldfinger 5638
JP Star Dominette 5534
- JP MS HARLAND GOLD 5006 { RCR 3027 Gold Harland 12020 { UPS Domino 3027
RCR 986 Miss Gold Harland ET
- JP MS 8099 MOM 3165 { UU Mister 8099
JP MS Aurum Dom 7528

•EPDs - BW +4.4 WW +49 YW +75 Milk +27 M&G +51
REA 13.89 %Fat 3.63

12

JP 6306 DOM 1047

Calved: Jan. 01, 2021 Tattoo: 1047 Reg. #44249164

- JP 334 DOM 6306 { JSS Domino 334 { CL 1 Domino 955W
H Lady Rancher 9040
- JP MS Harland 4561 { RCR 977 Harland ET
JP MS 412P Dom 7730
- JPMS 9166 HARLEY 7062 { UU Harley 9166 { H5 408 Domino 7100
UU MS Oregon 7186
- JP MS Solid Gold 8600 { JP Gold Star 5535
JP Miss Advance 3895

•EPDs - BW -0.9 WW +50 YW +90 Milk +23 M&G +48
REA 15.22 %Fat 3.63

13

JP 8083 DOM 1118

Calved: Jan. 17, 2021 Tattoo: 1118 Reg. #44248953

- JP 334 DOM 8083 { JSS Domino 334 { CL 1 Domino 955W
H Lady Rancher 9040
- JP MRS Gold Dom 3161 { JP Goldfinger 5638
JP Star Dominette 5534
- JP MS 753 Ribstone 3155 { F 157K Ribstone 753 { K64H Ribstone Lad 157K
F Extra Lass 318
- JP MS 3913 Dom 9481 { JP 1 Domino 3913
JP MS Aurum Dom 6885

•EPDs - BW +5.6 WW +55 YW +96 Milk +25 M&G +53
REA 14.01 %Fat 3.07



LOT 13 · JP 8083 DOM 1118

14

JP ADVANCE 1062

Calved: Jan. 04, 2021 Tattoo: 1062 Reg. #44248887

| | | | | | |
|-------------------------|---|------------------------|---|------------------------|-------------------------|
| JP ADVANCE 4501 | { | IMR Advance 7005 4ET | { | HH Advance 492D | |
| | | JP MS 9166 Harley 2089 | { | IMR C61 MS 5004 2ET | |
| JP MS 753 RIBSTONE 1568 | { | F 157K Ribstone 753 | { | UU Harley 9166 | |
| | | JP MISS Goldie 5444 | { | JP Miss Gold Star 5627 | |
| | | | | { | K 64H Ribstone Lad 157K |
| | | | | { | F Extra Lass 318 |
| | | | | { | TBH Goldfinger 101 |
| | | | | { | JP Lady Mark 0763 |

•EPDs - BW +3.8 WW +55 YW +94 Milk +32 M&G +62
REA 12.18 %Fat 3.94

15

JP 8107 SWAGGER 1046

Calved: Jan. 18, 2021 Tattoo: 1046 Reg. #44249447

| | | | | | |
|--------------------|---|----------------------|---|--------------------|------------------------|
| UU SWAGGER 8107F | { | SR Diablo 1095C | { | SR Indigo 1181Y | |
| | | UU Haley 2041 | { | SR Doodles 849 | |
| JP MS ADVANCE 8051 | { | JP Advance 4501 | { | H5 408 Domino 7100 | |
| | | JP MS 9437 Gold 3100 | { | UU MS Gold 0112 | |
| | | | | { | IMR Advance 7005 4ET |
| | | | | { | JP MS 9166 Harley 2089 |
| | | | | { | JP MR Gold Dom 9437 |
| | | | | { | JP 6017 Dominette 4263 |

•EPDs - BW +3.6 WW +60 YW +94 Milk +32 M&G +62
REA 12.18 %Fat 3.94

16

JP ADVANCE 1103

Calved: Jan. 14, 2021 Tattoo: 1103 Reg. #44249126

| | | | | | |
|--------------------|---|------------------------|---|------------------------|-----------------------|
| JP ADVANCE 4501 | { | IMR Advance 7005 4ET | { | HH Advance 492D | |
| | | JP MS 9166 Harley 2089 | { | IMR C61 MS 5004 2ET | |
| JP MS 334 DOM 6075 | { | JSS Domino 334 | { | UU Harley 9166 | |
| | | JP MS 412P Dom 8642 | { | JP Miss Gold Star 5627 | |
| | | | | { | CL 1 Domino 955W |
| | | | | { | H Lady Rancher 9040 |
| | | | | { | KB Mister Domino 412P |
| | | | | { | JP 6222 MS 9171 |

•EPDs - BW +3.7 WW +56 YW +90 Milk +25 M&G +53
REA 14.42 % Fat 3.62



LOT 16 · JP ADVANCE 1103

20

17

JP 8083 DOM 1061

Calved: Jan. 04, 2021 Tattoo: 1061 Reg. #44248942

| | | | | | |
|------------------------|---|------------------------|---|------------------------|---------------------------|
| JP 334 DOM 8083 | { | JSS Domino 334 | { | CL 1 Domino 955W | |
| | | JP MRS Gold Dom 3161 | { | H Lady Rancher 9040 | |
| JP MS 9166 HARLEY 2103 | { | UU Harley 9166 | { | JP Goldfinger 5638 | |
| | | JP MISS Gold Star 7504 | { | JP Star Dominette 5534 | |
| | | | | { | H5 408 Domino 7100 |
| | | | | { | UU MS Oregon 7186 |
| | | | | { | L Star Pure Gold L132 5ET |
| | | | | { | JP MS Luke 801 9071 |

•EPDs - BW +3.5 WW +54 YW +85 Milk +27 M&G +54
REA 116.41 %Fat 2.91



LOT 17 · JP 8083 DOM 1061

18

JP 8076 HARLAND 1115

Calved: Jan. 17, 2021 Tattoo: 1115 Reg. #44249118

| | | | | | |
|--------------------------|---|-------------------------|---|------------------------|-------------------------|
| JP HARLAND 8076 | { | JP Harland 4636 | { | RCR 977 Harland ET | |
| | | JP MS 753 Ribstone 3155 | { | JP MS Silver Brit 5598 | |
| JP MS 9009 RIBSTONE 6072 | { | C Ribstone 9009 | { | F 157K Ribstone 753 | |
| | | JP Miss Lad 8430 | { | JP MS 3913 Dom 9481 | |
| | | | | { | K 64H Ribstone Lad 157K |
| | | | | { | C MS Game Day 6072 |
| | | | | { | MH Star Lad 388 |
| | | | | { | JP 6017 Dominette 4263 |

•EPDs - BW +3.0 WW +50 YW +85 Milk +22 M&G +47
REA 13.24 %Fat 3.11



LOT 18 · JP 8076 HARLAND 1115

21

19 **JP 8083 DOM 1052**
 Calved: Jan. 03, 2021 Tattoo: 1052 Reg. #44249104

| | | | | |
|------------------------|---|----------------------|---|------------------------|
| JP 334 DOM 8083 | { | JSS Domino 334 | { | CL 1 Domino 955W |
| | | JP MRS Gold Dom 3161 | { | H Lady Rancher 9040 |
| JP MS 9166 HARLEY 6012 | { | UU Harley 9166 | { | JP Goldfinger 5638 |
| | | JP MS 3913 Dom 0119 | { | JP Star Dominette 5534 |
| | | | { | H5 408 Domino 7100 |
| | | | { | UU MS Oregon 7186 |
| | | | { | JP 1 Domino 3913 |
| | | | { | JP MS 412P Dom 7730 |

•EPDs - BW +3.8 WW +51 YW +84 Milk +26 M&G +51
 REA 13.58 %Fat 2.62

20 **JP 6306 DOM 1101**
 Calved: Jan. 14, 2021 Tattoo: 1101 Reg. #44249441

| | | | | |
|--------------------|---|---------------------|---|------------------------|
| JP 334 DOM 6306 | { | JSS Domino 334 | { | CL 1 Domino 955W |
| | | JP MS Harland 4561 | { | H Lady Rancher 9040 |
| JP MS HARLAND 7200 | { | JP Harland 4636 | { | RCR 977 Harland ET |
| | | JP MS Gold Dom 1599 | { | JP MS 412P Dom 7730 |
| | | | { | RCR 977 Harland ET |
| | | | { | JP MS Silver Brit 5598 |
| | | | { | JP Goldfinger 5638 |
| | | | { | JP Miss Lad 6719 |

•EPDs - BW +1.6 WW +56 YW+91 Milk +19 M&G +47
 REA 13.93 %Fat 2.67

21 **JP 8076 HARLAND 1093**
 Calved: Jan. 12, 2021 Tattoo: 1093 Reg. #44249162

| | | | | |
|-----------------------|---|-------------------------|---|------------------------|
| JP HARLAND 8076 | { | JP Harland 4636 | { | RCR 977 Harland ET |
| | | JP MS 753 Ribstone 3155 | { | JP MS Silver Brit 5598 |
| JPMS 9166 HARLEY 7061 | { | UU Harley 9166 | { | F 157K Ribstone 753 |
| | | JP Miss Advance 0101 | { | JP MS 3913 Dom 9481 |
| | | | { | H5 408 Domino 7100 |
| | | | { | UU MS Oregon 7186 |
| | | | { | IMR Advance 7005 4ET |
| | | | { | JP MS Mark Dom 7785 |

•EPDs - BW +2.7 WW +55 YW +97 Milk +22 M&G +49
 REA 12.71 %Fat 3.63

22 **JP ADVANCE 1066**
 Calved: Jan. 06, 2021 Tattoo: 1066 Reg. #44249091

| | | | | |
|---------------------|---|------------------------|---|------------------------|
| JP ADVANCE 4501 | { | IMR Advance 7005 4ET | { | HH Advance 492D |
| | | JP MS 9166 Harley 2089 | { | IMR C61 MS 5004 2ET |
| JP MS 8658 DOM 5166 | { | JP Mister Domino 8658 | { | UU Harley 9166 |
| | | JP MS Solid Gold 0225 | { | JP Miss Gold Star 5627 |
| | | | { | KB Mister Domino 412P |
| | | | { | JP Star Dominette 4307 |
| | | | { | JP Gold Star 5535 |
| | | | { | JP Miss Mark 1319 |

•EPDs - BW +3.5 WW +52 YW +83 Milk +22 M&G +48
 REA 14.44 %Fat 3.54



LOT 22 · JP ADVANCE 1066

23 **JP 6306 DOM 1139**
 Calved: Jan.27, 2021 Tattoo: 1139 Reg. #44248824

| | | | | |
|---------------------|---|--------------------|---|-----------------------|
| JP 334 DOM 6306 | { | JSS Domino 334 | { | CL 1 Domino 955W |
| | | JP MS Harland 4561 | { | H Lady Rancher 9040 |
| JP MS GOLD DOM 0312 | { | JP Goldfinger 5638 | { | RCR 977 Harland ET |
| | | JP Miss Mark 3733 | { | JP MS 412P Dom 7730 |
| | | | { | TBH Goldfinger 101 |
| | | | { | JP MS Domino 804 7030 |
| | | | { | ORE 4411 Mark 6222 |
| | | | { | ORE 2164 Miss 5242 |

•EPDs - BW +3.1 WW +51 YW +88 Milk +25 M&G +50
 REA 14.70 %Fat 3.22



24

JP 6306 DOM 1040

Calved: Jan. 01, 2021 Tattoo: 1040 Reg. #44249093

| | | | | |
|--------------------------|---|-----------------------|---|---------------------|
| JP 334 DOM 6306 | { | JSS Domino 334 | { | CL 1 Domino 955W |
| | | JP MS Harland 4561 | { | H Lady Rancher 9040 |
| JP MS 2206 RIBSTONE 5170 | { | JP 9009 Ribstone 2206 | { | RCR 977 Harland ET |
| | | JP MS Golden 1522 | { | JP MS 412P Dom 7730 |
| | | | | C Ribstone 9009 |
| | | | { | JP MS Gold Dom 8603 |
| | | | { | JP Goldfinger 5538 |
| | | | { | JP Sandy 4290 |

•EPDs - BW +4.8 WW +57 YW +91 Milk +28 M&G +56
REA 13.83 %Fat 3.52



LOT 24 · JP 6306 DOM 1040

27

JP 6306 DOM 1099

Calved: Jan. 14, 2021 Tattoo: 1099 Reg. #44249211

| | | | | |
|--------------------|---|--------------------|---|------------------------|
| JP 334 DOM 6306 | { | JSS Domino 334 | { | CL 1 Domino 955W |
| | | JP MS Harland 4561 | { | H Lady Rancher 9040 |
| JP MS ADVANCE 7119 | { | JP Advance 4501 | { | RCR 977 Harland ET |
| | | JP MS Golden 0271 | { | JP MS 412P Dom 7730 |
| | | | | IMR Advance 7005 4ET |
| | | | { | JP MS 9166 Harley 2089 |
| | | | { | JP Goldfinger 5538 |
| | | | { | JP 6222 Miss 9116 |

•EPDs - BW +2.3 WW +57 YW +89 Milk +27 M&G +56
REA 13.18 %Fat 3.68



LOT 27 · JP 6306 DOM 1099

25

JP 4065 DOM 1138

Calved: Jan. 26, 2021 Tattoo: 1138 Reg. #44248823

| | | | | |
|-------------------------|---|------------------------|---|---------------------------|
| HWR 177R DOMINO 4065 ET | { | GB L1 Domino 177R | { | GB L1 Domino 8143M |
| | | K&B Lynn Dom 4096 | { | GB L1 Dom PRCS 690K |
| JP MS 750 STANDARD 0252 | { | CTY High Standard 750T | { | CL1 Domino 1181L |
| | | JP MS Aurum 6716 | { | K&B Stardust 0231K |
| | | | | LCI 157K Ribstone 4P |
| | | | { | Courtney Lass N338 |
| | | | { | RCR Aurum Domino MT 01030 |
| | | | { | JP Mark Donna 1296 |

•EPDs - BW +5.9 WW +63 YW +93 Milk +24 M&G +56
REA 12.87 %Fat 3.66

28

JP 4065 DOM 1116

Calved: Jan. 17, 2021 Tattoo: 1116 Reg. #44249079

| | | | | |
|--------------------------|---|-----------------------|---|----------------------|
| HWR 177R Domino 4065 ET | { | GB L1 Domino 177R | { | GB L1 Domino 8143M |
| | | K&B Lynn Dom 4096 | { | GB L1 Dom PRCS 690K |
| JP MS 2206 RIBSTONE 5093 | { | JP 9009 Ribstone 2206 | { | CL 1 Domino 1181L |
| | | JP MS 3913 Dom 1404 | { | K&B Stardust 0231K |
| | | | | C Ribstone 9009 |
| | | | { | JP MS Gold Dom 8603 |
| | | | { | JP 1 Domino 3913 |
| | | | { | JP MS Robin Dom 8645 |

•EPDs - BW +1.3 WW +50 YW +68 Milk +27 M&G +52
REA 13.78 %Fat 2.70



26

JP 8083 DOM 1096

Calved: Jan. 12, 2021 Tattoo: 1096 Reg. #44249208

| | | | | |
|--------------------------|---|-----------------------|---|------------------------|
| JP 334 DOM 8083 | { | JSS Domino 334 | { | CL 1 Domino 955W |
| | | JP MRS Gold Dom 3161 | { | H Lady Rancher 9040 |
| JP MS 2206 RIBSTONE 7118 | { | JP 9009 Ribstone 2206 | { | JP Goldfinger 5638 |
| | | JP MS 3913 Dom 2007 | { | JP Star Dominette 5534 |
| | | | | C Ribstone 9009 |
| | | | { | JP MS Gold Dom 8603 |
| | | | { | JP 1 Domino 3913 |
| | | | { | JP Dominet 1011 0105 |

•EPDs - BW +2.3 WW +47 YW +69 Milk +28 M&G +51
REA 11.61 %Fat 2.69

29

JP 6306 DOM 1114

Calved: Jan. 17, 2021 Tattoo: 1114 Reg. #44249076

| | | | | |
|------------------------|---|---------------------|---|---------------------|
| JP 334 DOM 6306 | { | JSS Domino 334 | { | CL 1 Domino 955W |
| | | JP MS Harland 4561 | { | H Lady Rancher 9040 |
| JP MS 3041 DOMINO 5076 | { | C 105Y Domino 3041 | { | RCR 977 Harland ET |
| | | JP MS 8099 Mom 2190 | { | JP MS 412P Dom 7730 |
| | | | { | CL 1 Domino 105Y |
| | | | { | CH2 Lady 0028 |
| | | | { | UU Mister 8099 |
| | | | { | JP Miss Goldie 5415 |

•EPDs - BW +3.5 WW +54 YW +82 Milk +29 M&G +57
 REA 12.73 %Fat 3.65



LOT 29 · JP 6306 DOM 1114

31

JP 6306 DOM 1057

Calved: Jan. 04, 2021 Tattoo: 1057 Reg. #44249111

| | | | | |
|------------------------|---|----------------------|---|-----------------------|
| JP 334 DOM 6306 | { | JSS Domino 334 | { | CL 1 Domino 955W |
| | | JP MS Harland 4561 | { | H Lady Rancher 9040 |
| JP MS 977 HARLAND 6041 | { | RCR 977 Harland ET | { | RCR 977 Harland ET |
| | | JP MS Robin Dom 8733 | { | JP MS 412P Dom 7730 |
| | | | { | CJH Harland 408 |
| | | | { | RCR Aurum Domet 00071 |
| | | | { | KB Domino 424P |
| | | | { | JP Miss Goldie 5444 |

•EPDs - BW +0.7 WW +49 YW +86 Milk +24 M&G +49
 REA 13.43 %Fat 3.53



LOT 31 · JP 6306 DOM 1057

30

JP 8076 HARLAND 1111

Calved: Jan. 16, 2021 Tattoo: 1111 Reg. #44249435

| | | | | |
|---------------------|---|-------------------------|---|------------------------|
| JP HARLAND 8076 | { | JP Harland 4636 | { | RCR 977 Harland ET |
| | | JP MS 753 Ribstone 3155 | { | JP MS Silver Brit 5598 |
| JP MS 4065 DOM 7158 | { | HWR 177R Domino 4065 ET | { | F 157K Ribstone 753 |
| | | | { | JP MS 3913 Dom 9481 |
| | | | { | GB L1 Domino 177R |
| | | JP MS 8463 Dom 2156 | { | K&B Lynn Dom 4096 |
| | | | { | JP Robin Domino 8463 |
| | | | { | JP MS Solid Gold 8715 |

•EPDs - BW +6.1 WW +66 YW +108 Milk +21 M&G +54
 REA 14.58 %Fat 3.06



32

JP 4065 DOM 1130

Calved: Jan. 22, 2021 Tattoo: 1130 Reg. #44249158

| | | | | | |
|-------------------------|---|-----------------------|---------------------|---------------------|------------------------|
| HWR 177R DOMINO 4065 ET | { | GB L1 Domino 177R | { | GB L1 Domino 8143M | |
| | | K&B Lynn Dom 4096 | { | GB L1 Dom PRCS 690K | |
| JP MS 8658 DOM 6207 | { | JP Mister Domino 8658 | { | CL 1 Domino 1181L | |
| | | | JP MS 3913 DOM 2012 | { | K&B Stardust 0231K |
| | | | | { | KB Mister Domino 412P |
| | | | | { | JP Star Dominette 4307 |
| | | | { | JP 1 Domino 3913 | |
| | | | { | JP MS Gold Dom 0228 | |

•EPDs - BW +4.2 WW +60 YW +88 Milk +18 M&G +48
 REA 14.15 %Fat 3.72



LOT 32 · JP 4065 DOM 1130

33 **JP 8076 HARLAND 1158**
 Calved: Feb. 24, 2021 Tattoo: 1158 Reg. #44249160

| | | | | |
|------------------------|---|-------------------------|---|------------------------|
| JP HARLAND 8076 | { | JP Harland 4636 | { | RCR 977 Harland ET |
| | | JP MS 753 Ribstone 3155 | | JP MS Silver Brit 5598 |
| JP MS 9166 HARLEY 7057 | { | UU Harley 9166 | { | F 157K Ribstone 753 |
| | | JP MS 753 Ribstone 1463 | | JP MS 3913 Dom 9481 |
| | | | | H5 408 Domino 7100 |
| | | | | UU MS Oregon 7186 |
| | | | | F 157K Ribstone 753 |
| | | | | JP Miss Gold Star 6744 |

•EPDs - BW +5.0 WW +62 YW +106 Milk +19 M&G +50
 REA 14.16 %Fat 2.96

34 **JP 8083 DOM 1051**
 Calved: Jan. 03, 2021 Tattoo: 1051 Reg. #44249072

| | | | | |
|------------------------|---|----------------------|---|------------------------|
| JP 334 DOM 8083 | { | JSS Domino 334 | { | CL 1 Domino 955W |
| | | JP MRS Gold Dom 3161 | | H Lady Rancher 9040 |
| JP MS 9166 HARLEY 5066 | { | UU Harley 9166 | { | JP Goldfinger 5638 |
| | | JP MS Golden 0208 | | JP Star Dominette 5534 |
| | | | | H5 408 Domino 7100 |
| | | | | UU MS Oregon 7186 |
| | | | | JP Goldfinger 5538 |
| | | | | JP MS Dom 4103 |

•EPDs - BW +2.4 WW +49 YW +81 Milk +24 M&G +49
 REA 15.51 %Fat 3.35



LOT 34 · JP 8083 DOM 1051

35 **JP 6306 DOM 1080**
 Calved: Jan. 09, 2021 Tattoo: 1080 Reg. #44249100

| | | | | |
|------------------------|---|---------------------|---|-------------------------|
| JP 334 DOM 6306 | { | JSS Domino 334 | { | CL 1 Domino 955W |
| | | JP MS Harland 4561 | | H Lady Rancher 9040 |
| JP MS 3063 DOMINO 5220 | { | H Domino 3063 ET | { | RCR 977 Harland ET |
| | | JP MS 8463 Dom 2090 | | JP MS 412P Dom 7730 |
| | | | | CL 1 Domino 955W |
| | | | | HH Miss Advance 5139 ET |
| | | | | JP Robin Domino 8463 |
| | | | | JP Miss Lad 8662 |

•EPDs - BW +1.6 WW +49 YW +88 Milk +28 M&G +53
 REA 13.59 %Fat 4.00



LOT 35 · JP 6306 DOM 1080

36 **JP ADVANCE 1160**
 Calved: Feb. 28, 2021 Tattoo: 1160 Reg. #44249066

| | | | | |
|--------------------|---|------------------------|---|---------------------------|
| JP ADVANCE 4501 | { | IMR Advance 7005 4ET | { | HH Advance 492D |
| | | JP MS 9166 Harley 2089 | | IMR C61 MS 5004 2ET |
| JP MS HARLAND 4671 | { | RCR 977 Harland ET | { | UU Harley 9166 |
| | | JP Miss Gold Star 7552 | | JP Miss Gold Star 5627 |
| | | | | CJH Harland 408 |
| | | | | RCR Aurum Domet 00071 |
| | | | | L Star Pure Gold L132 5ET |
| | | | | JP Miss Mark 2508 |

•EPDs - BW +4.6 WW +55 YW +94 Milk +26 M&G +54
 REA 13.26 %Fat 3.48



LOT 36 · JP ADVANCE 1160

37

JP 8107 SWAGGER 1088

Calved: Jan. 11, 2021 Tattoo: 1088 Reg. #44249491

- | | | | | |
|------------------|---|--------------------------|---|------------------------|
| UU SWAGGER 8107F | { | SR Diablo 1095C | { | SR Indigo 1181Y |
| | | UU Haley 2041 | { | SR Doodles 849 |
| JP ADVANCE 8135 | { | JP Advance 4501 | { | H5 408 Domino 7100 |
| | | JP MS 9009 Ribstone 2102 | { | UU MS Gold 0112 |
| | | | { | IMR Advance 7005 4ET |
| | | | { | JP MS 9166 Harley 2089 |
| | | | { | C Ribstone 9009 |
| | | | { | JP MS Mark Dom 8697 |

•EPDs - BW +3.6 WW +53 YW +85 Milk +33 M&G +59
REA 14.38 %Fat 2.87



LOT 37 · JP 8107 SWAGGER 1088

39

JP 8083 DOM 1098

Calved: Jan. 13, 2021 Tattoo: 1098 Reg. #44249089

- | | | | | |
|------------------------|---|----------------------|---|------------------------|
| JP 334 DOM 8083 | { | JSS Domino 334 | { | CL 1 Domino 955W |
| | | JP MRS Gold Dom 3161 | { | H Lady Rancher 9040 |
| JP MS 3041 DOMINO 5162 | { | C 105Y Domino 3041 | { | JP Goldfinger 5638 |
| | | JP MS Ribstone 2100 | { | JP Star Dominette 5534 |
| | | | { | CL 1 Domino 105Y |
| | | | { | C H2 Lady 0028 |
| | | | { | JP Robin Domino 8463 |
| | | | { | JP MS Solid Gold 8715 |

•EPDs - BW +3.6 WW +51 YW +82 Milk +31 M&G +56
REA 17.62 %Fat 3.64



LOT 39 · JP 8083 DOM 1098

38

JP 8107 SWAGGER 1143

Calved: Feb. 02, 2021 Tattoo: 1143 Reg. #44249493

- | | | | | |
|----------------------|---|------------------------|---|--------------------------|
| UU SWAGGER 8107F | { | SR Diablo 1095C | { | SR Indigo 1181Y |
| | | UU Haley 2041 | { | SR Doodles 849 |
| JP MS 4615 GOLD 8150 | { | JP 9437 Gold 4615 | { | H5 408 Domino 7100 |
| | | JP MS 3041 Domino 5196 | { | UU MS Gold 0112 |
| | | | { | JP MR Gold Dom 9437 |
| | | | { | JP MS 3913 Dom 0117 |
| | | | { | C 105Y Domino 3041 |
| | | | { | JP MS 9009 Ribstone 2099 |

•EPDs - BW +3.2 WW +56 YW +91 Milk +32 M&G +60
REA 13.91 %Fat 4.09



40

JP 8107 SWAGGER 1157

Calved: Feb. 22, 2021 Tattoo: 1157 Reg. #44249459

- | | | | | |
|--------------------|---|---------------------|---|------------------------|
| UU SWAGGER 8107F | { | SR Diablo 1095C | { | SR Indigo 1181Y |
| | | UU Haley 2041 | { | SR Doodles 849 |
| JP MS 334 DOM 8114 | { | JSS Domino 334 | { | H5 408 Domino 7100 |
| | | JP MS 412P Dom 0205 | { | UU MS Gold 0112 |
| | | | { | CL 1 Domino 955W |
| | | | { | H Lady Rancher 9040 |
| | | | { | KB Mister Domino 412P |
| | | | { | JP Star Dominette 5534 |

•EPDs - BW +3.8 WW +57 YW +96 Milk +28 M&G +57
REA 14.11 %Fat 4.25



41

JP 6306 DOM 1127

Calved: Jan. 18, 2021 Tattoo: 1127 Reg. #44248955

| | | | | |
|-------------------|---|------------------------|---|-------------------------|
| JP 334 DOM 6306 | { | JSS Domino 334 | { | CL 1 Domino 955W |
| | | JP MS Harland 4561 | { | H Lady Rancher 9040 |
| JPMRSGOLDDOM 3161 | { | JP Goldfinger 5638 | { | RCR 977 Harland ET |
| | | JP Star Dominette 5534 | { | JP MS 412P Dom 7730 |
| | | | { | TBH Goldfinger 101 |
| | | | { | JP MS Domino 804 7030 |
| | | | { | PMH Star Donald 927 3ET |
| | | | { | JP MS Advance 0852 |

•EPDs - BW +2.4 WW +50 YW +81 Milk +23 M&G +48
 REA 13.10 %Fat 2.62



LOT 41 · JP 6306 DOM 1127

43

JP 6441 ADVANCE 1013

Calved: Jan. 06, 2021 Tattoo: 1013 Reg. #44249539

| | | | | |
|---------------------|---|-------------------------|---|-------------------------|
| H Advance 6441 ET | { | HH Advance 4075B ET | { | HH Advance 1013Y ET |
| | | CL 1 Dominette 1169Y ET | { | HH Miss Advance 0121X |
| JP MS 6306 DOM 9123 | { | JP 334 Dom 6306 | { | C1 Domino 955W |
| | | | { | CL 1 Dominette 440P 1ET |
| | | JP MS 3063 Domino 6059 | { | JSS Domino 334 |
| | | | { | JP MS Harland 4561 |
| | | | { | H Domino 3063 ET |
| | | | { | JP MS Gold Dom 3171 |

•EPDs - BW +1.2 WW +49 YW +82 Milk +22 M&G +46
 REA 14.18 %FAT 3.72

44

JP 8076 HARLAND 1144

Calved: Feb. 05, 2021 Tattoo: 1144 Reg. #44249184

| | | | | |
|---------------------|---|-------------------------|---|------------------------|
| JP Harland 8076 | { | JP Harland 4636 | { | RCR 977 Harland ET |
| | | JP MS 753 Ribstone 3155 | { | JP MS Silver Brit 5598 |
| JP MS 4065 DOM 7103 | { | HWR 177R Domino 4065 ET | { | F 157K Ribstone 753 |
| | | | { | JP MS 3913 Dom 9481 |
| | | JP MS James Dom 1504 | { | GB L1 Domino 177R |
| | | | { | K&B Lynn Dom 4096 |
| | | | { | JP 3913 Domino 6853 |
| | | | { | JP Miss Pep 6805 |

•EPDs - BW +1.4 WW +56 YW +86 Milk +18 M&G +46
 REA 11.45 %Fat 3.37

42

JP 8083 DOM 1067

Calved: Jan. 06, 2021 Tattoo: 1067 Reg. #44249071

| | | | | |
|---------------------|---|----------------------|---|------------------------|
| JP 334 DOM 8083 | { | JSS Domino 334 | { | CL 1 Domino 955W |
| | | JP MRS Gold Dom 3161 | { | H Lady Rancher 9040 |
| JPMMS9166HARLEY5060 | { | UU Harley 9166 | { | JP Goldfinger 5638 |
| | | JP MS Robin Dom 8416 | { | JP Star Dominette 5534 |
| | | | { | H5 408 Domino 7100 |
| | | | { | UU MS Oregon 7186 |
| | | | { | KB Domino 424P |
| | | | { | JP Miss Mark 2508 |

•EPDs - BW +3.7 WW +50 YW +81 Milk +25 M&G +50
 REA 15.00 %Fat 2.84



LOT 42 · JP 8083 DOM 1067

32

45

JP 4065 DOM 1113

Calved: Jan. 16, 2021 Tattoo: 1113 Reg. #44248945

| | | | | |
|---------------------|---|-----------------------|---|---------------------------|
| HWR177RDOMINO4065ET | { | GB L1 Domino 177R | { | GB L1 Domino 8143M |
| | | K&B Lynn Dom 4096 | { | GB L1 Dom PRCS 690K |
| JP MS 8658 DOM 2151 | { | JP Mister Domino 8658 | { | CL 1 Domino 1181L |
| | | | { | K&B Stardust 0231K |
| | | JP Miss Gold 3857 | { | KB Mister Domino 412P |
| | | | { | JP Star Dominette 4307 |
| | | | { | L Star Pure Gold L132 5ET |
| | | | { | JP Star Lass X6774 |

•EPDs - BW +4.4 WW +59 YW +84 Milk +19 M&G +49
 REA 15.51 %Fat 3.15



33

46

JP 4065 DOM 1049

Calved: Jan. 02, 2021 Tattoo: 1049 Reg. #44249115

| | | | | |
|-------------------------|---|-----------------------|---|--------------------------|
| HWR 177R DOMINO 4065 ET | { | GB L1 Domino 177R | { | GB L1 Domino 8143M |
| | | K&B Lynn Dom 4096 | | GB L1 Dom PRCS 690K |
| JP MS 8658 DOM 6051 | { | JP Mister Domino 8658 | { | CL 1 Domino 1181L |
| | | JP MS Golden 9426 | | K&B Stardust 0231K |
| | | | | KB Mister Domino 412P |
| | | | | JP Star Dominette 4307 |
| | | | | JP Goldfinger 5538 |
| | | | | JP Miss Advance 801 9182 |

•EPDs - BW +5.1 WW +56 YW +82 Milk +16 M&G +44
REA 12.90 %Fat 3.59



LOT 46 · JP 4065 DOM 1049

48

JP 8076 HARLAND 1162

Calved: Mar. 02, 2021 Tattoo: 1162 Reg. #44249105

| | | | | |
|------------------------|---|-------------------------|---|------------------------|
| JP HARLAND 8076 | { | JP Harland 4636 | { | RCR 977 Harland ET |
| | | JP MS 753 Ribstone 3155 | | JP MS Silver Brit 5598 |
| JP MS 9166 HARLEY 6018 | { | UU Harley 9166 | { | F 157K Ribstone 753 |
| | | JP MS Gold Dom 1585 | | JP MS 3913 Dom 9481 |
| | | | | H5 408 Domino 7100 |
| | | | | UU MS Oregon 7186 |
| | | | | JP Goldfinger 5638 |
| | | | | JP Miss Classic 3826 |

•EPDs - BW +5.4 WW +61 YW +101 Milk +22 M&G +52
REA 14.02 %Fat 2.48

49

JP MS 6306 DOM 1142

Calved: Feb. 02, 2021 Tattoo: 1142 Reg. #44248950

| | | | | |
|----------------------|---|--------------------|---|-------------------------|
| JP 334 DOM 6306 | { | JSS Domino 334 | { | CL 1 Domino 955W |
| | | JP MS Harland 4561 | | H Lady Rancher 9040 |
| JPMS9009RIBSTONE3104 | { | C Ribstone 9009 | { | RCR 977 Harland ET |
| | | JP MS Golden 0273 | | JP MS 412P Dom 7730 |
| | | | | K 64H Ribstone Lad 157K |
| | | | | C MS Game Day 6072 |
| | | | | JP Goldfinger 5538 |
| | | | | JP Miss Mark 2449 |

•EPDs - BW +1.2 WW +40 YW +68 Milk +29 M&G +49
REA 12.35 %Fat 3.01

47

JP 6441 ADVANCE 1012

Calved: Jan. 05, 2021 Tattoo: 1012 Reg. #44249519

| | | | | |
|-----------------------|---|--------------------------|---|-------------------------|
| H ADVANCE 6441 ET | { | HH Advance 4075B ET | { | HH Advance 1013Y ET |
| | | CL 1 Dominette 1169Y 1ET | | HH Miss Advance 0121X |
| JP MS 6363 PATCH 9069 | { | UU Patch 6263D | { | CL 1 Domino 955W |
| | | JP MS 8712 Dom 4583 | | CL 1 Dominette 440P 1ET |
| | | | | H5 2185 Domino 4201 |
| | | | | UU Haley 2016 |
| | | | | JP Mark Domino 8712 |
| | | | | JP MS 753 Ribstone 1625 |

•EPDs - BW +0.8 WW +48 YW +73 Milk +25 M&G +49
REA 13.95 %Fat 3.29



LOT 47 · JP 6441 ADVANCE 1012

34

50

JP 8076 HARLAND 1145

Calved: Feb. 03, 2021 Tattoo: 1145 Reg. #44249446

| | | | | |
|--------------------|---|-------------------------|---|------------------------|
| JP HARLAND 8076 | { | JP Harland 4636 | { | RCR 977 Harland ET |
| | | JP MS 753 Ribstone 3155 | | JP MS Silver Brit 5598 |
| JP MS 334 DOM 7240 | { | JSS Domino 334 | { | F 157K Ribstone 753 |
| | | JP MS 412P Dom 8657 | | JP MS 3913 Dom 9481 |
| | | | | CL 1 Domino 955W |
| | | | | H Lady Rancher 9040 |
| | | | | KB Mister Domino 412P |
| | | | | JP 927 Dominette 2653 |

•EPDs - BW +7.3 WW +66 YW +109 Milk +18 M&G +51
REA 14.30 %Fat 3.33



LOT 50 · JP 8076 HARLAND 1145

35

51 JP 6441 ADVANCE 1021

Calved: Jan. 11, 2021 Tattoo: 1021 Reg. #44249523

HADVANCE 6441 ET { HH Advance 4075B ET { HH Advance 1013Y ET
 HH Miss Advance 0121X
 CL 1 Dominette 1169Y 1ET { CL 1 Domino 955W
 CL 1 Dominette 440P 1ET
 JP MS 334 DOM 9081 { JSS Domino 334 { CL 1 Domino 955W
 H Lady Rancher 9040
 JP MS 3063 Domino 5210 { H Domino 3063 ET
 JP MS 3913 Dom 2012

•EPDs - BW +0.5 WW +43 YW +69 Milk +22 M&G +43
 REA 13.61 %Fat 2.59



LOT 51 · JP 6441 ADVANCE 1021

54 JP 4065 DOM 1094

Calved: Jan. 12, 2021 Tattoo: 1094 Reg. #44249095

HWR 177R DOMINO 4065 ET { GB L1 Domino 177R { GB L1 Domino 8143M
 GB L1 Dom PRCS 690K
 K&B Lynn Dom 4096 { K&B Stardust 0231K
 CL 1 Domino 1181L
 JP MS 3063 DOMINO 5181 { H Domino 3063 ET { CL 1 Domino 955W
 HH Miss Advance 5139R ET
 JP MS 9009 Ribstone 2131 { C Ribstone 9009
 JP MS Gold Dom 8737

•EPDs - BW +1.4 WW +50 YW +75 Milk +27 M&G +52
 REA 16.26 %Fat 3.84



LOT 54 · JP 4065 DOM 1094

52 JP 6306 DOM 1069

Calved: Jan. 07, 2021 Tattoo: 1069 Reg. #44249179

JP 334 DOM 6306 { JSS Domino 334 { CL 1 Domino 955W
 H Lady Rancher 9040
 JP MS Harland 4561 { RCR 977 Harland ET
 JP MS 412P Dom 7730
 JP MS 334 DOM 7093 { JSS Domino 334 { CL 1 Domino 955W
 H Lady Rancher 9040
 JP MS 8426 Aurum 2098 { JP Aurum Dom 8426
 JP Star Dominette 4307

•EPDs - BW +3.4 WW +64 YW +98 Milk +26 M&G +58
 REA 14.35 %Fat 3.18

LOT REMOVED

53

55 JP 6441 ADVANCE 1018

Calved: Jan. 08, 2021 Tattoo: 1018 Reg. #44249518

HADVANCE 6441 ET { HH Advance 4075B ET { HH Advance 1013Y ET
 HH Miss Advance 0121X
 CL 1 Dominette 1169Y 1ET { CL 1 Domino 955W
 CL 1 Dominette 440P 1ET
 JP MS 6263 PATCH 9068 { UU Patch 6263D { H5 2185 Domino 4201
 UU Haley 2016
 JP MS Gold Dom 2143 { JP Goldfinger 5638
 JP Miss Classic 3826

•EPDs - BW +3.7 WW +49 YW +74 Milk +24 M&G +49
 REA 13.84 %Fat 2.86

56 JP 8076 HARLAND 1123

Calved: Jan. 18, 2021 Tattoo: 1123 Reg. #44249443

JP HARLAND 8076 { JP Harland 4636 { RCR 977 Harland ET
 JP MS Silver Brit 5598
 JP MS 753 Ribstone 3155 { F 157K Ribstone 753
 JP MS 3913 Dom 9481
 JP MS 4065 DOM 7207 { HWR 177R Domino 4065 ET { GB L1 Domino 177R
 K&B Lynn Dom 4096
 JP MS 3844 Dom 7541 { JP 1 Domino 3844
 JP Miss Pep 4305

•EPDs - BW +2.5 WW +59 YW +96 Milk +17 M&G +46
 REA 14.61 %Fat 3.88

57

JP 6441 ADVANCE 1028

Calved: Jan. 20, 2021 Tattoo: 1028 Reg. #44249535

| | | | | |
|---------------------|---|--------------------------|---|-------------------------|
| HADVANCE 6441 ET | { | HH Advance 4075B ET | { | HH Advance 1013Y ET |
| | | CL 1 Dominette 1169Y 1ET | { | HH Miss Advance 0121X |
| JP MS 4065 DOM 9118 | { | HWR 177R Domino 4065 ET | { | CL 1 Domino 955W |
| | | JP MS Gold Dom 0336 | { | CL 1 Dominette 440P 1ET |
| | | | | GB L1 Domino 177R |
| | | | { | K&B Lynn Dom 4096 |
| | | | { | JP Goldfinger 5638 |
| | | | { | JP Mark Donna 0723 |

•EPDs - BW +3.8 WW +53 YW +78 Milk +20 M&G +46
REA 13.25 %Fat 3.54



LOT 57 · JP 6441 ADVANCE 1028

NOTES

58

JP 6441 ADVANCE 1015

Calved: Jan. 07, 2021 Tattoo: 1015 Reg. #44249517

| | | | | |
|-----------------------|---|--------------------------|---|-------------------------|
| HADVANCE 6441 ET | { | HH Advance 4075B ET | { | HH Advance 1013Y ET |
| | | CL 1 Dominette 1169Y 1ET | { | HH Miss Advance 0121X |
| JP MS 6263 PATCH 9063 | { | UU Patch 6263D | { | CL 1 Domino 955W |
| | | JP MS 9437 Gold 3102 | { | CL 1 Dominette 440P 1ET |
| | | | | H5 2185 Domino 4201 |
| | | | { | UU Haley 2016 |
| | | | { | JP MR Gold Dom 9437 |
| | | | { | JP MS Mark Dom 8611 |

•EPDs - BW +2.3 WW +52 YW +75 Milk +26 M&G +52
REA 15.23 %Fat 14.07



LOT 58 · JP 6441 ADVANCE 1015



59 JP 8076 HARLAND 1078
 Calved: Jan. 08, 2021 Tattoo: 1078 Reg. #44249085

JP HARLAND 8076 { JP Harland 4636 { RCR 977 Harland ET
 JP MS Silver Brit 5598
 JP MS 753 Ribstone 3155 { F 157K Ribstone 753
 JP MS 3913 Dom 9481

JP MS 8658 DOM 5145 { JP Mister Domino 8658 { KB Mister Domino 412P
 JP Star Dominette 4307
 JP Miss Gold Star 7503 { L Star Pure Gold L132.5ET
 JP Lady Style 0762

•EPDs - BW +2.2 WW +46 YW +82 Milk +10 M&G +33
 REA 15.11 %Fat 3.63

62 JP 4065 DOM 1131
 Calved: Jan. 23, 2021 Tattoo: 1131 Reg. #44249061

HWR 177R DOMINO 4065 ET { GB L1 Domino 177R { GB L1 Domino 8143M
 GB L1 Dom PRCS 690K
 K&B Lynn Dom 4096 { CL1 Domino 1181L
 K&B Stardust 0231K

JP MS 8712 DOM 4583 { JP Mark Domino 8712 { JP 6017 Domino 4342
 JP Miss Goldie 6717
 JP MS 753 Ribstone 1625 { F 157K Ribstone 753
 JP 6017 Dominette 4263

•EPDs - BW +3.2 WW +53 YW +87 Milk +23 M&G +50
 REA 14.85 %Fat 3.83

60 JP 8107 SWAGGER 1108
 Calved: Jan. 15, 2021 Tattoo: 1108 Reg. #44249461

UU SWAGGER 8107F { SR Diablo 1095C { SR Indigio 1181Y
 SR Doodles 849
 UU Haley 2041 { H5 408 Domino 7100
 UU MS Gold 0112

JP MS 334 DOM 8116 { JSS Domino 334 { CL 1 Domino 955W
 H Lady Rancher 9040
 JP MS Robin Dom 1489 { KB Domino 424P
 JP Miss Goldie 5523

•EPDs - BW +5.2 WW +59 YW +86 Milk +32 M&G +61
 REA 12.71 %Fat 2.96

63 JP 8076 HARLAND 1164
 Calved: Mar. 04, 2021 Tattoo: 1164 Reg. #44249119

JP HARLAND 8076 { JP Harland 4636 { RCR 977 Harland ET
 JP MS Silver Brit 5598
 JP MS 753 Ribstone 3155 { F 157K Ribstone 753
 JP MS 3913 Dom 9481

JP MS 334 DOM 6073 { JSS Domino 334 { CL 1 Domino 955W
 H Lady Rancher 9040
 JP MS 7733 Easy 0144 { CTY Easy 7733T
 JP MS 412P Dom 8460

•EPDs - BW +5.3 WW +59 YW +108 Milk +20 M&G +49
 REA 13.36 %Fat 3.78

61 JP 4065 DOM 1110
 Calved: Jan. 16, 2021 Tattoo: 1110 Reg. #44249097

HWR 177R DOMINO 4065 ET { GB L1 Domino 177R { GB L1 Domino 8143M
 GB L1 Dom PRCS 690K
 K&B Lynn Dom 4096 { CL1 Domino 1181L
 K&B Stardust 0231K

JP MS 2206 RIBSTONE 5204 { JP 9009 Ribstone 2206 { C Ribstone 9009
 JP MS Golden 0240 { JP MS Gold Dom 8603
 JP Goldfinger 5538
 JP MS Star 4120

•EPDs - BW +3.2 WW +53 YW +78 Milk +25 M&G +52
 REA 14.94 %Fat 3.34



LOT 63 · JP 8076 HARLAND 1164



LOT 61 · JP 4065 DOM 1110

64 **JP 8083 DOM 1163**
 Calved: Mar. 04, 2021 Tattoo: 1163 Reg. #44249101

| | | |
|---------------------|-------------------------|--------------------------|
| JP 334 DOM 8083 | { JSS Domino 334 | { CL 1 Domino 955W |
| | { JP MRS Gold Dom 3161 | { HLady Rancher 9040 |
| | | { JP Goldfinger 5638 |
| JP MS 8658 DOM 5227 | { JP Mister Domino 8658 | { JP Star Dominette 5534 |
| | { JP Miss Lad 8662 | { KB Mister Domino 412P |
| | | { JP Star Dominette 4307 |
| | | { MH Star Lad 388 |
| | | { JP AA Dominette 2571 |

•EPDs - BW +4.0 WW +54 YW +81 Milk +20 M&G +47
 REA 12.93 %Fat 2.26

65 **JP 4065 DOM 1136**
 Calved: Feb. 02, 2021 Tattoo: 1136 Reg. #44249218

| | | |
|-------------------------|-----------------------|--------------------------|
| HWR 177R DOMINO 4065 ET | { GB L1 Domino 177R | { GB L1 Domino 8143M |
| | { K&B Lynn Dom 4096 | { GB L1 Dom PRCS 690K |
| | | { CL1 Domino 1181L |
| JP MS HARLAND 7124 | { JP Harland 4636 | { K&B Stardust 0231K |
| | { JP MS 8463 Dom 1472 | { RCR 977 Harland ET |
| | | { JP MS Silver Brit 5598 |
| | | { JP Robin Domino 8463 |
| | | { JP Miss Gold Star 7503 |

•EPDs - BW +5.2 WW +68 YW +99 Milk +20 M&G +54
 REA 14.34 %Fat 3.21

66 **JP 8083 DOM 1161**
 Calved: Mar. 02, 2021 Tattoo: 1161 Reg. #44249087

| | | |
|-----------------------|------------------------|--------------------------|
| JP 334 DOM 8083 | { JSS Domino 334 | { CL 1 Domino 955W |
| | { JP MRS Gold Dom 3161 | { H Lady Rancher 9040 |
| | | { JP Goldfinger 5638 |
| JPMS 3041 DOMINO 5150 | { C 105Y Domino 3041 | { JP Star Dominette 5534 |
| | { JP MS 8099 MOM 2181 | { CL 1 Domino 105Y |
| | | { C H2 Lady 0028 |
| | | { UU Mister 8099 |
| | | { JP Miss Gold Star 5572 |

•EPDs - BW +5.6 WW +59 YW+86 Milk +31 M&G+61
 REA 15.16 %Fat 2.79



LOT 66 · JP 8083 DOM 1161

67 **JP 4065 DOM 1125**
 Calved: Jan. 18, 2021 Tattoo: 1125 Reg. #44248820

| | | |
|-------------------------|--------------------------|-----------------------------|
| HWR 177R DOMINO 4065 ET | { GB L1 Domino 177R | { GB L1 Domino 8143M |
| | { K&B Lynn Dom 4096 | { GB L1 Dom PRCS 690K |
| | | { CL1 Domino 1181L |
| JP MS 701 RIBSTONE 0243 | { CTY High Standard 701T | { K&B Stardust 0231K |
| | { JP MS Aurum Dom 6901 | { LCI 157K Ribstone 4P |
| | | { Courtney Lass L159 |
| | | { RCR Aurum Domino MT 01030 |
| | | { JP Dominette 6114 0663 |

•EPDs - BW +4.3 WW +60 YW +82 Milk +20 M&G +50
 REA 11.56 %Fat 2.29

68 **JP MS 8076 HARLAND 1104**
 Calved: Jan. 14, 2021 Tattoo: 1104 Reg. #44249060

| | | |
|---------------------|---------------------------|--------------------------|
| JP HARLAND 8076 | { JP Harland 4636 | { RCR 977 Harland ET |
| | { JP MS 753 Ribstone 3155 | { JP MS Silver Brit 5598 |
| | | { F 157K Ribstone 753 |
| JP MS 8658 DOM 4569 | { JP Mister Domino 8658 | { JP MS 3913 Dom 9481 |
| | { JP MS Solid Gold 8632 | { KB Mister Domino 412P |
| | | { JP Star Dominette 4307 |
| | | { JP Gold Star 5535 |
| | | { JP Markette 2565 |

•EPDs - BW +2.6 WW +47 YW +82 Milk +12 M&G +36
 REA 12.42 %Fat 3.46

69 **JP 6441 ADVANCE 1009**
 Calved: Jan.16, 2021 Tattoo: 1009 Reg. #44249533

| | | |
|--------------------|-----------------------------|---------------------------|
| H ADVANCE 6441 ET | { HH Advance 4075B ET | { HH Advance 1013Y ET |
| | { CL 1 Dominette 1169Y 1 ET | { HH Miss Advance 0121X |
| | | { CL 1 Domino 955W |
| JP MS 334 DOM 9105 | { JSS Domino 334 | { CL 1 Dominette 440P 1ET |
| | { JP MS 3063 Domino 5220 | { CL 1 Domino 955W |
| | | { H Lady Rancher 9040 |
| | | { H Domino 3063 ET |
| | | { JP MS 8463 Dom 2090 |

•EPDs - BW +1.4 WW +47 YW +76 Milk +23 M&G +47
 REA 14.54 %Fat 3.73

70 **JP 6306 DOM 1147**
 Calved: Feb. 05, 2021 Tattoo: 1147 Reg. #44249107

| | | |
|----------------------|--------------------------|-----------------------------|
| JP 334 DOM 6306 | { JSS Domino 334 | { CL 1 Domino 955W |
| | { JP MS Harland 4561 | { H Lady Rancher 9040 |
| | | { RCR 977 Harland ET |
| JPMS9009RIBSTONE6025 | { C Ribstone 9009 | { JP MS 412P Dom 7730 |
| | { JP Miss Gold Star 7504 | { K 64H Ribstone Lad 157K |
| | | { C MS Game Day 6072 |
| | | { L Star Pure Gold L132 5ET |
| | | { JP MS Luke 801 9071 |

•EPDs - BW +2.3 WW +48 YW +74 Milk +27 M&G +51
 REA 15.57 %Fat 3.73

71

JP 8076 HARLAND 1151

Calved: Feb. 28, 2021 Tattoo: 1151 Reg. #4429439

| | | | | |
|--------------------|---|-------------------------|---|------------------------|
| JP HARLAND 8076 | { | JP Harland 4636 | { | RCR 977 Harland ET |
| | | JP MS 753 Ribstone 3155 | { | JP MS Silver Brit 5598 |
| JP MS ADVANCE 7183 | { | JP Advance 4501 | { | F 157K Ribstone 753 |
| | | JP MRS Gold Dom 3161 | { | JP MS 3913 Dom 9481 |
| | | | { | IMR Advance 7005 4ET |
| | | | { | JP MS 9166 Harley 2089 |
| | | | { | JP Goldfinger 5638 |
| | | | { | JP Star Dominette 5534 |

•EPDs - BW +4.3 WW +56 YW +100 Milk +20 M&G +48
REA 13.68 %Fat 3.76



LOT 71 · JP 8076 HARLAND 1151

73

JP 6441 ADVANCE 1002

Calved: Jan. 02, 2021 Tattoo: 1002 Reg. #44249512

| | | | | |
|------------------------|---|--------------------------|---|-------------------------|
| H ADVANCE 6441 ET | { | HH Advance 4075B ET | { | HH Advance 1013Y ET |
| | | CL 1 Dominette 1169Y 1ET | { | HH Miss Advance 0121X |
| JP MS 6305 DOMINO 9047 | { | JP 3063 Domino 6305 | { | CL 1 Domino 955W |
| | | JP MS 334 Dom 6094 | { | CL 1 Dominette 440P 1ET |
| | | | { | H Domino 3063 ET |
| | | | { | JP MS Harland 4671 |
| | | | { | JSS Domino 334 |
| | | | { | JP MS 9166 Harley 2103 |

•EPDs - BW 0.0 WW +39 YW +67 Milk +21 M&G +40
REA 14.3 %Fat 3.85



LOT 73 · JP 6441 ADVANCE 1002

72

JP 6441 ADVANCE 1036

Calved: Mar. 02, 2021 Tattoo: 1036 Reg. #44249527

| | | | | |
|---------------------|---|--------------------------|---|-------------------------|
| H Advance 6441 ET | { | HH Advance 4075B ET | { | HH Advance 1013Y ET |
| | | CL 1 Dominette 1169Y 1ET | { | HH Miss Advance 0121X |
| JP MS 4065 Dom 9089 | { | HWR 177R Domino 4065 ET | { | CL 1 Domino 955W |
| | | JP MSGold Dom 1560 | { | CL 1 Dominette 440P 1ET |
| | | | { | GB L1 Domino 177R |
| | | | { | K&B Lynn Dom 4096 |
| | | | { | JP Goldfinger 5638 |
| | | | { | JP Sandy 4167 |

•EPDs - BW -1.6 WW +42 YW +62 Milk +20 M&G +41
REA 13.65 %Fat 3.71



LOT 72 · JP 6441 ADVANCE 0513

44

74

JP 6441 ADVANCE 1024

Calved: Jan. 13, 2021 Tattoo: 1024 Reg. #44249549

| | | | | |
|-----------------------|---|--------------------------|---|-------------------------|
| H ADVANCE 6441 ET | { | HH Advance 4075B ET | { | HH Advance 1013Y ET |
| | | CL 1 Dominette 1169Y 1ET | { | HH Miss Advance 0121X |
| JP MS 6263 PATCH 9138 | { | UU Patch 6263D | { | CL 1 Domino 955W |
| | | JP MS 8658 Dom 5227 | { | CL 1 Dominette 440P 1ET |
| | | | { | H5 2185 Domino 4201 |
| | | | { | UU Haley 2016 |
| | | | { | JP Mister Domino 8658 |
| | | | { | JP Miss Lad 8662 |

•EPDs - BW +1.1 WW +48 YW +73 Milk +22 M&G +46
REA 13.36 %Fat 3.77



LOT 74 · JP 6441 ADVANCE 1024

45

75 JP 8083 DOM 1146
 Calved: Feb. 05, 2021 Tattoo: 1146 Reg. #44248799

JP 334 DOM 8083 { JSS Domino 334 { CL 1 Domino 955W
 { JP Mrs Gold Dom 3161 { H Lady Rancher 9040
 { JP Goldfinger 5638
 { JP Star Dominette 5534

JP MISS ADVANCE 0114 { IMR Advance 7005 4ET { HH Advance 492D
 { JP MS Aurum Dom 7534 { IMR C61 MS 5004 2ET
 { RCR Aurum Domino MT 01030
 { JP Dominett 1242

•EPDs - BW +2.3 WW +38 YW +69 Milk +22 M&G +41
 REA 13.10 %Fat 2.82

79 JP 6441 ADVANCE 1004
 Calved: Jan. 10, 2021 Tattoo: 1004 Reg. #44249540

H ADVANCE 6441 ET { HH Advance 4075B ET { HH Advance 1013Y ET
 { CL 1 Dominette 1169Y 1ET { HH Miss Advance 0121X
 { CL 1 Domino 955W
 { CL 1 Dominette 440P 1 ET

JP MS 6306 DOM 9125 { JP 334 Dom 6306 { JSS Domino 334
 { JP MS 3063 Domino 6035 { JP MS Harland 4561
 { H Domino 3063 ET
 { JP MS 8463 Dom 3083

•EPDs - BW +1.0 WW +45 YW +77 Milk +20 M&G +43
 REA 15.18 %Fat 4.24

76 JP 6441 ADVANCE 1030
 Calved: Jan. 27, 2021 Tattoo: 1030 Reg. #44249550

H ADVANCE 6441 ET { HH Advance 4075B ET { HH Advance 1013Y ET
 { CL 1 Dominette 1169Y 1ET { HH Miss Advance 0121X
 { CL 1 Domino 955W
 { CL 1 Dominette 440P 1ET

JP MS 4065 DOM 9147 { HWR 177R Domino 4065 ET { GB L1 Domino 177R
 { JP MS Golden 0305 { K&B Lynn Dom 4096
 { JP Goldfinger 5538
 { JP Lady Advance 1226

•EPDs - BW +2.9 WW +46 YW +78 Milk +19 M&G +42
 REA 12.80 %Fat 3.74

80 JP 6441 ADVANCE 1014
 Calved: Jan. 07, 2021 Tattoo: 1014 Reg. #44249538

H ADVANCE 6441 ET { HH Advance 4075B ET { HH Advance 1013Y ET
 { CL 1 Dominette 1169Y 1ET { HH Miss Advance 0121X
 { CL 1 Domino 955W
 { CL 1 Dominette 440P 1ET

JP MS 6306 DOM 9122 { JP 334 Dom 6306 { JSS Domino 334
 { JP MS 3063 Domino 6049 { JP MS Harland 4561
 { H Domino 3063 ET
 { JP MS 5753 Ribstone 3112

•EPDs - BW -2.5 WW +34 YW +51 Milk +18 M&G +35
 REA 12.91 %Fat 3.26

77 JP 8083 DOM 1137
 Calved: Jan. 25, 2021 Tattoo: 1137 Reg. #44248892

JP 334 DOM 8083 { JSS Domino 334 { CL 1 Domino 955W
 { JP MRS Gold Dom 3161 { H Lady Rancher 9040
 { JP Goldfinger 5638
 { JP Star Dominette 5534

JP MS GOLD DOM 1599 { JP Goldfinger 5638 { TBH Goldfinger 101
 { JP MISS Lad 6719 { JP SM Domino 804 7030
 { MH Star Lad 388
 { JP Markette 2630

•EPDs - BW +3.1 WW +45 YW +65 Milk +26 M&G +48
 REA 13.95 %Fat 2.96

81 JP 6441 ADVANCE 1000
 Calved: Jan. 01, 2021 Tattoo: 1000 Reg. #44249513

H ADVANCE 6441 ET { HH Advance 4075B ET { HH Advance 1013Y ET
 { CL 1 Dominette 1169Y 1ET { HH Miss Advance 0121X
 { CL 1 Domino 955W
 { CL 1 Dominette 440P 1 ET

JP MS 334 DOM 9048 { JSS Domino 334 { H Lady Rancher 9040
 { JP MS Harland Gold 5005 { Rcr 3027 Gold Harland 12020
 { JP MS 8463 Dom 3064

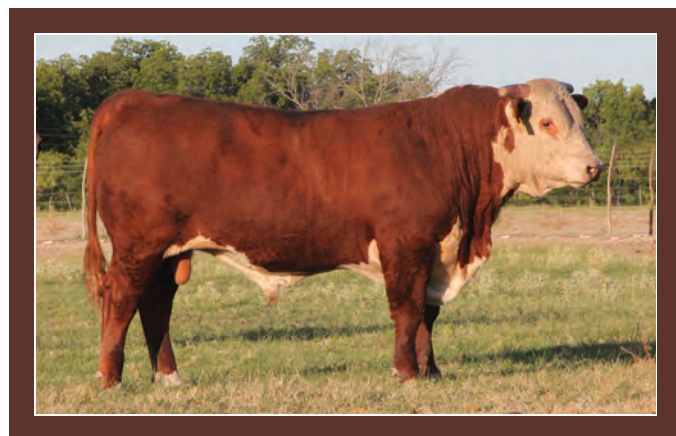
•EPDs - BW -2.3 WW +39 YW +65 Milk +21 M&G +40
 REA 15.5 %Fat 3.95

78 JP ADVANCE 1060
 Calved: Jan. 04, 2021 Tattoo: 1060 Reg. #44249123

JP ADVANCE 4501 { IMR ADVANCE 7005 4ET { HH Advance 1013Y ET
 { JP MS 9166 Harley 2089 { HH Miss Advance 0121X
 { H Payback 807 ET
 { HH Miss Advance 5139 RET

JP MS HARLAND 6074 { RCR 977 Harland ET { C1 Domino 955W
 { JP MS 3913 Dom 0150 { HH Miss Advance 5139R ET
 { JP MR Gold Dom 9437
 { JP MS Mark Dom 8611

•EPDs - BW +3.3 WW +54 YW +90 Milk +18 M&G +45
 REA 13.00 %Fat 4.06



LOT 81 · JP 6441 ADVANCE 1000

82

JP 8076 HARLAND 1167

Calved: Mar. 17, 2021 Tattoo: 1167 Reg. #44249433

| | | | | |
|--------------------|---|-------------------------|---|------------------------|
| JP HARLAND 8076 | { | JP Harland 4636 | { | RCR 977 Harland ET |
| | | JP MS 753 Ribstone 3155 | { | JP MS Silver Brit 5598 |
| JP MS 334 DOM 7141 | { | JSS DOMINO 334 | { | F 157K Ribstone 753 |
| | | JP MS 8658 DOM 2151 | { | JP MS 3913 Dom 9481 |
| | | | { | CL 1 DOMINO 955W |
| | | | { | HLADY RANCHER 9040 |
| | | | { | JP MISTER DOMINO 8658 |
| | | | { | JP MISS GOLD 3857 |

•EPDs - BW +2.5 WW +55 YW +98 Milk +18 M&G +46
 REA 15.04 %Fat 3.21



LOT 82 · JP 8076 HARLAND 1167

83

JP 8107 SWAGGER 1165

Calved: Mar. 08, 2021 Tattoo: 1165 Reg. #44249476

| | | | | |
|--------------------|---|----------------------|---|------------------------|
| UU SWAGGER 8107F | { | SR Diablo 1095C | { | SR Indigo 1181Y |
| | | UU Haley 2041 | { | SR Doodles 849 |
| JP MS 334 DOM 8119 | { | JSS Domino 334 | { | H5 408 Domino 7100 |
| | | JP Dominet 1011 0125 | { | UU MS Gold 0112 |
| | | | { | CL 1 Domino 955W |
| | | | { | H Lady Rancher 9040 |
| | | | { | RCR L1 Domino 1011 |
| | | | { | JP Miss Gold Star 7575 |

•EPDs - BW +2.7 WW +55 YW +83 Milk +28 M&G +56
 REA 12.93 %Fat 3.77

84

JP 8076 HARLAND 1168

Calved: Mar. 19, 2021 Tattoo: 1168 Reg. #44249206

| | | | | |
|--------------------|---|-------------------------|---|------------------------|
| JP HARLAND 8076 | { | JP Harland 4636 | { | RCR 977 Harland ET |
| | | JP MS 753 Ribstone 3155 | { | JP MS Silver Brit 5598 |
| JP MS 334 DOM 7117 | { | JSS Domino 334 | { | F 157K Ribstone 753 |
| | | JP MS 753 Ribstone 3189 | { | JP MS 3913 Dom 9481 |
| | | | { | CL 1 Domino 955W |
| | | | { | H Lady Rancher 9040 |
| | | | { | F 157K Ribstone 753 |
| | | | { | JP MS Robin Dom 8701 |

•EPDs - BW +4.9 WW +58 YW +95 Milk +20 M&G +49
 REA 12.86 %Fat 3.65

48

85

JP 6441 ADVANCE 1035

Calved: Feb. 27, 2021 Tattoo: 1035 Reg. #44249528

| | | | | |
|---------------------|---|--------------------------|---|-------------------------|
| H Advance 6441ET | { | HH Advance 4075B ET | { | HH Advance 1013Y ET |
| | | CL 1 Dominette 1169Y 1ET | { | HH Miss Advance 0121X |
| JP MS 4065 DOM 9090 | { | HWR 177R Domino 4065 ET | { | CL 1 Domino 955W |
| | | JP MS 750 Standard 0252 | { | CL 1 Dominette 440P 1ET |
| | | | { | GB L1 Domino 177R |
| | | | { | K&B Lynn Dom 4096 |
| | | | { | CTY High Standard 750T |
| | | | { | JP MS Aurum 6716 |

•EPDs - BW +4.7 WW +57 YW +96 Milk +20 M&G +48
 REA 13.36 %Fat 3.37

86

JP 4065 DOM 1172

Calved: Mar. 24, 2021 Tattoo: 1172 Reg. #44249056

| | | | | |
|------------------------|---|----------------------|---|---------------------------|
| HWR 177R DOMINO4065 ET | { | GB L1 Domino 177R | { | GB L1 Domino 8143M |
| | | K&B Lynn Dom 4096 | { | GB L1 Dom PRCS 690K |
| JP MS 8426 AURUM 3203 | { | JP Aurum Dom 8426 | { | CL 1 Domino 1181L |
| | | JP MS Robin Dom 9470 | { | K&B Stardust 0231K |
| | | | { | RCR Aurum Domino MT 01030 |
| | | | { | JP Dominett 1265 |
| | | | { | KB Domino 424P |
| | | | { | JP MISS Gold Star 5627 |

•EPDs - BW +2.7 WW +54 YW +84 Milk +24 M&G +52
 REA 13.46 %Fat 3.61

87

JP 6441 ADVANCE 1022

Calved: Jan. 12, 2021 Tattoo: 1022 Reg. #44249520

| | | | | |
|---------------------|---|---------------------------|---|-------------------------|
| HADVANCE 6441 ET | { | HH Advance 4075B ET | { | HH Advance 1013Y ET |
| | | CL 1 Dominette 1169Y 1 ET | { | HH Miss Advance 0121X |
| JP MS 4065 DOM 9070 | { | HWR 177R Domino 4065 ET | { | CL 1 Domino 955W |
| | | JP MS 8658 Dom 2151 | { | CL 1 Dominette 440P 1ET |
| | | | { | GB L1 Domino 177R |
| | | | { | K&B Lynn Dom 4096 |
| | | | { | JP Mister Domino 8658 |
| | | | { | JP Miss Gold 3857 |

•EPDs - BW +0.8 WW +47 YW +71 Milk +17 M&G +40
 REA 15.80 %Fat 3.78

88

JP 4065 DOM 1135

Calved: Feb. 02, 2021 Tattoo: 1135 Reg. #44249213

| | | | | |
|-------------------------|---|---------------------|---|------------------------|
| HWR 177R DOMINO 4065 ET | { | GB L1 Domino 177R | { | GB L1 Domino 8143M |
| | | K&B Lynn Dom 4095 | { | GB L1 Dom PRCS 690K |
| JP MS HARLAND 7124 | { | JP Harland 4636 | { | CL1 Domino 1181L |
| | | JP MS 8463 Dom 1472 | { | K&B Stardust 0231K |
| | | | { | RCR 977 Harland ET |
| | | | { | JP MS Silver Brit 5598 |
| | | | { | JP Robin Domino 8463 |
| | | | { | JP Miss Gold Star 7503 |

•EPDs - BW +3.6 WW +60 YW +90 Milk +20 M&G +50
 REA 12.86 %Fat 3.46

49



YEARLING BULLS

Ribeye scans of the yearling bulls will be taken after the publication date of this catalog. Ribeye measurements and updated EPD's will be made available on sale day or before the sale by request.



JP 8107 SWAGGER 1204

101

Calved: Aug. 30, 2021 Tattoo: 1204 Reg. #44317609

| | | | | |
|--------------------|---|----------------------|---|---------------------|
| UU SWAGGER 8107F | { | SR Diablo 1095C | { | SR Indigo 1181Y |
| | | UU Haley 2041 | { | SR Doodles 849 |
| JP MS 334 DOM 9310 | { | JSS Domino 334 | { | H5 408 Domino 7100 |
| | | JP MS Robin Dom 8733 | { | UU MS Gold 0112 |
| | | | { | CL 1 Domino 955W |
| | | | { | H Lady Rancher 9040 |
| | | | { | KB Domino 424P |
| | | | { | JP Miss Goldie 5444 |

•EPDs - BW +3.8 WW +54 YW +84 Milk +31 M&G +58

JP 6306 DOM 1206

102

Calved: Sep. 01, 2021 Tattoo: 1206 Reg. #44317570

| | | | | |
|------------------------|---|----------------------|---|----------------------|
| JP 334 DOM 6306 | { | JSS Domino 334 | { | CL 1 Domino 955W |
| | | JP MS Harland 4561 | { | H Lady Rancher 9040 |
| JP MS 9166 HARLEY 7059 | { | UU Harley 9166 | { | RJR 977 Harland ET |
| | | JP MS Robin Dom 7774 | { | JP MS 412P Dom 7730 |
| | | | { | H5 408 Domino 7100 |
| | | | { | UU MS Oregon 7186 |
| | | | { | KB Domino 424P |
| | | | { | JP Miss Advance 1152 |

•EPDs - BW +1.9 WW +56 YW +93 Milk +23 M&G +52

JP 6306 DOM 1207

103

Calved: Sep. 01, 2021 Tattoo: 1207 Reg. #44317576

| | | | | |
|------------------------|---|----------------------|---|-------------------------|
| JP 334 DOM 6306 | { | JSS Domino 334 | { | CL 1 Domino 955W |
| | | JP MS Harland 4561 | { | H Lady Rancher 9040 |
| JP MS 3063 DOMINO 7077 | { | H Domino 3063 ET | { | RJR 977 Harland ET |
| | | JP MS 9437 Gold 3102 | { | JP MS 412P Dom 7730 |
| | | | { | CL 1 Domino 955W |
| | | | { | HH Miss Advance 5139RET |
| | | | { | JP MS 9437 Gold 3102 |
| | | | { | JP MS Mark Dom 8611 |

•EPDs - BW +2.6 WW +56 YW +95 Milk +27 M&G +55

JP 6306 DOM 1208

104

Calved: Sep. 01, 2021 Tattoo: 1208 Reg. #44317473

| | | | | |
|--------------------|---|----------------------|---|---------------------|
| JP 334 DOM 6306 | { | JSS Domino 334 | { | CL 1 Domino 955W |
| | | JP MS Harland 4561 | { | H Lady Rancher 9040 |
| JP MS 334 DOM 6047 | { | JSS Domino 334 | { | RJR 977 Harland ET |
| | | JP Dominet 1011 1412 | { | JP MS 412P Dom 7730 |
| | | | { | CL 1 Domino 955W |
| | | | { | H Lady Rancher 9040 |
| | | | { | JP Miss Lad 8624 |

•EPDs - BW +2.0 WW +57 YW +94 Milk +23 M&G +52

JP 6306 DOM 1209

105

Calved: Sep. 02, 2021 Tattoo: 1209 Reg. #44317449

| | | | | |
|--------------------------|---|---------------------|---|-------------------------|
| JP 334 DOM 6306 | { | JSS Domino 334 | { | CL 1 Domino 955W |
| | | JP MS Harland 4561 | { | H Lady Rancher 9040 |
| JP MS 9009 RIBSTONE 4647 | { | C Ribstone 9009 | { | RJR 977 Harland ET |
| | | JP MS 8099 MOM 1482 | { | JP MS 412P Dom 7730 |
| | | | { | K 64H Ribstone Lad 157K |
| | | | { | C MS Game Day 6072 |
| | | | { | UU Mister 8099 |
| | | | { | JP MS Aurum Dom 7839 |

•EPDs - BW +2.5 WW +47 YW +75 Milk +27 M&G +50

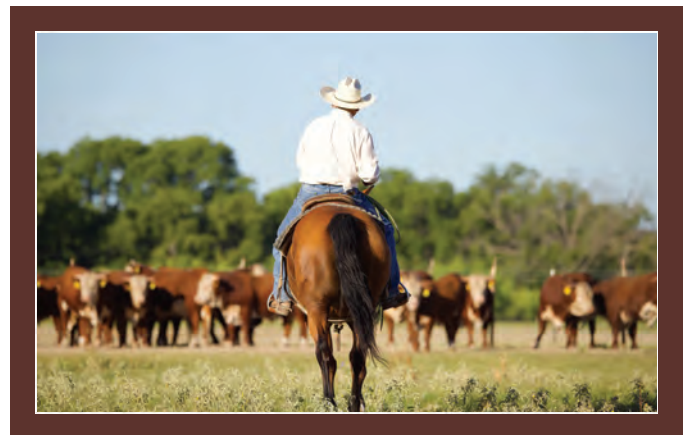
JP 6441 ADVANCE 1210

106

Calved: Sep. 07, 2021 Tattoo: 1210 Reg. #44317617

| | | | | |
|-----------------------|---|--------------------------|---|-------------------------|
| HADVANCE 6441 ET | { | HH Advance 4075B ET | { | HH Advance 1013Y ET |
| | | CL 1 Dominette 1169Y 1ET | { | HH Miss Advance 0121X |
| JP MS 6263 PATCH 9324 | { | UU Patch 6263D | { | CL 1 Domino 955W |
| | | JP MS 8658 Dom 6107 | { | CL 1 Dominette 440P 1ET |
| | | | { | H5 2185 Domino 4201 |
| | | | { | UU Haley 2016 |
| | | | { | JP Mister Domino8658 |
| | | | { | JP MS Gold Dom 1561 |

•EPDs - BW +0.8 WW +47 YW +72 Milk +22 M&G +46



JP 8076 DOM 1213

107

Calved: Sep. 08, 2021 Tattoo: 1213 Reg. #44317586

| | | |
|------------------------|---------------------------|----------------------------|
| JP HARLAND 8076 | { JP Harland 4636 | { RCR 977 Harland ET |
| | { JP MS 753 Ribstone 3155 | { JP MS Silver Brit 5598 |
| | | { F 157K Ribstone 753 |
| | | { JP MS 3913 Dom 9481 |
| JP MS 3063 DOMINO 8126 | { H Domino 3063 ET | { CL 1 Domino 955W |
| | { JP MS Harland 4612 | { HH Miss Advance 5139R ET |
| | | { RCR 977 Harland ET |
| | | { JP MS Gold Dom 0336 |

•EPDs - BW +2.3 WW +51 YW +92 Milk +21 M&G +46

JP 703 ADVANCE 1214

108

Calved: Sep. 08, 2021 Tattoo: 1214 Reg. #44317587

| | | |
|------------------------|-----------------------|----------------------------|
| MCC ADVANCE 703 | { HH Advance 4075B ET | { HH Advance 1013Y ET |
| | { H Tiffany 3035 ET | { HH Miss Advance 0121X |
| | | { H Payback 807 ET |
| | | { HH Miss Advance 5139R ET |
| JP MS 3063 DOMINO 8200 | { H Domino 3063 ET | { CL 1 Domino 955W |
| | { JP MS Gold Dom 4600 | { HH Miss Advance 5139R ET |
| | | { JP Goldfinger 5638 |
| | | { JP MS 701 Ribstone 0243 |

•EPDs - BW +2.6 WW +47 YW +73 Milk +19 M&G +43

JP 6306 DOM 1217

109

Calved: Sep. 13, 2021 Tattoo: 1217 Reg. #44317439

| | | |
|------------------------|-----------------------|-----------------------|
| JP 334 DOM 6306 | { JSS Domino 334 | { CL 1 Domino 955W |
| | { JP MS Harland 4561 | { H Lady Rancher 9040 |
| | | { RCR 977 Harland ET |
| | | { JP MS 412P Dom 7730 |
| JP MS 8493 DOMINO 1441 | { JP 3913 Domino 8493 | { JP 1 Domino 3913 |
| | { JP MS Gold Dom 8619 | { JP MS Aurum 5529 |
| | | { JP Goldfinger 5638 |
| | | { JP AA Dominete 1321 |

•EPDs - BW +2.2 WW +53 YW +86 Milk +26 M&G +53



54

JP 6306 DOM 1219

110

Calved: Sep. 13, 2021 Tattoo: 1219 Reg. #44317471

| | | |
|---------------------|---------------------------|--------------------------|
| JP 334 DOM 6306 | { JSS Domino 334 | { CL 1 Domino 955W |
| | { JP MS Harland 4561 | { H Lady Rancher 9040 |
| | | { RCR 977 Harland ET |
| | | { JP MS 412P Dom 7730 |
| JP MS 4065 DOM 6009 | { HWR 177R Domino 4065 ET | { GB L1 Domino 177R |
| | { JP MS 8426 Aurum 4687 | { K&B Lynn Dom 4096 |
| | | { JP Aurum Dom 8426 |
| | | { JP Miss Gold Star 7542 |

•EPDs - BW +1.6 WW +58 YW +95 Milk +23 M&G +52

JP 703 ADVANCE 1220

111

Calved: Sep. 14, 2021 Tattoo: 1220 Reg. #44317588

| | | |
|--------------------|-------------------------|----------------------------|
| MCC ADVANCE 703 | { HH Advance 4075B ET | { HH Advance 1013Y ET |
| | { H Tiffany 3035 ET | { HH Miss Advance 0121X |
| | | { H Payback 807 ET |
| | | { HH Miss Advance 5139R ET |
| JP MS 334 DOM 8201 | { JSS Domino 334 | { CL 1 Domino 955W |
| | { JP MS 8426 Aurum 1507 | { H Lady Rancher 9040 |
| | | { JP Aurum Dom 8426 |
| | | { JP Miss Lad 8404 |

•EPDs - BW +2.5 WW +50 YW +76 Milk +17 M&G +42

JP 8076 HARLAND 1221

112

Calved: Sep. 14, 2021 Tattoo: 1221 Reg. #44317470

| | | |
|-----------------------|---------------------------|--------------------------|
| JP HARLAND 8076 | { JP Harland 4636 | { RCR 977 Harland ET |
| | { JP MS 753 Ribstone 3155 | { JP MS Silver Brit 5598 |
| | | { F 157K Ribstone 753 |
| | | { JP MS 3913 Dom 9481 |
| JPMS 3041 DOMINO 5100 | { C 105Y Domino 3041 | { CL 1 Domino 105Y |
| | { JP MS 8426 Aurum 2129 | { C H2 Lady 0028 |
| | | { JP Aurum Dom 8426 |
| | | { JP Miss Genesis 4205 |

•EPDs - BW +3.6 WW +53 YW +87 Milk +22 M&G +48



55

113 **JP 703 ADVANCE 1222**
 Calved: Sep. 14, 2021 Tattoo: 1222 Reg. #44317598

| | | |
|------------------------|-------------------------|----------------------------|
| MCC ADVANCE 703 | { HH Advance 4075B ET | { HH Advance 1013Y ET |
| | { H Tiffany 3035 ET | { HH Miss Advance 0121X |
| | | { H Payback 807 ET |
| | | { HH Miss Advance 5139R ET |
| JP MS 3063 DOMINO 8213 | { H Domino 3063 ET | { CL 1 Domino 955W |
| | { JP Miss Gold Dom 0307 | { HH Miss Advance 5139R ET |
| | | { JP Goldfinger 5638 |
| | | { JP Miss Classic 3826 |

•EPDs - BW +3.7 WW +49 YW +77 Milk +19 M&G +44

114 **JP 6306 DOM 1223**
 Calved: Sep. 14, 2021 Tattoo: 1223 Reg. #44317451

| | | |
|-------------------------|-------------------------------|--------------------------------|
| JP 334 DOM 6306 | { JSS Domino 334 | { CL 1 Domino 955W |
| | { JP MS Harland 4561 | { H Lady Rancher 9040 |
| | | { RCR 977 Harland ET |
| | | { JP MS 412P Dom 7730 |
| JP MS HARLAND GOLD 5020 | { RCR 3027 Gold Harland 12020 | { UPS Domino 3027 |
| | { JP MS 9166 Harley 3066 | { RCR 986 Miss Gold Harland ET |
| | | { UU Harley 9166 |
| | | { JP Miss Gold Star 5470 |

•EPDs - BW +2.6 WW +55 YW +88 Milk +24 M&G +52

115 **JP 6441 ADVANCE 1224**
 Calved: Sep. 15, 2021 Tattoo: 1224 Reg. #44317613

| | | |
|--------------------|----------------------------|---------------------------|
| H ADVANCE 6441 ET | { HH Advance 4075B ET | { HH Advance 1013Y ET |
| | { CL 1 Dominette 1169Y 1ET | { HH Miss Advance 0121X |
| | | { CL 1 Domino 955W |
| | | { CL 1 Dominette 440P 1ET |
| JP MS 334 DOM 9318 | { JSS Domino 334 | { CL 1 Domino 955W |
| | { JP MS Golden 1522 | { H Lady Rancher 9040 |
| | | { JP Goldfinger 5538 |
| | | { JP Sandy 4290 |

•EPDs - BW +2.2 WW +45 YW +71 Milk +21 M&G +43

116 **JP 6306 DOM 1228**
 Calved: Sep. 20, 2021 Tattoo: 1228 Reg. #44317447

| | | |
|---------------------|---------------------------|--------------------------|
| JP 334 DOM 6306 | { JSS Domino 334 | { CL 1 Domino 955W |
| | { JP MS Harland 4561 | { H Lady Rancher 9040 |
| | | { RCR 977 Harland ET |
| | | { JP MS 412P Dom 7730 |
| JP MS 8463 DOM 3121 | { JP Robin Domino 8463 | { KB Domino 424P |
| | { JP MS 750 Standard 0252 | { JP Miss Mark 3731 |
| | | { CTY High Standard 750T |
| | | { JP MS Aurum 6716 |

•EPDs - BW +2.2 WW +49 YW +78 Milk +27 M&G +52

117 **JP 8076 HARLAND 1229**
 Calved: Sep. 20, 2021 Tattoo: 1229 Reg. #44317467

| | | |
|---------------------|---------------------------|-----------------------------|
| JP HARLAND 8076 | { JP Harland 4636 | { RCR 977 Harland ET |
| | { JP MS 753 Ribstone 3155 | { JP MS Silver Brit 5598 |
| | | { F 157K Ribstone 753 |
| | | { JP MS 3913 Dom 9481 |
| JP MS 8463 DOM 5092 | { JP Robin Domino 8463 | { KB Domino 424P |
| | { JP MS Aurum Dom 0220 | { JP Miss Mark 3731 |
| | | { RCR Aurum Domino MT 01030 |
| | | { JP Miss Classic 4249 |

•EPDs - BW +3.9 WW +46 YW +79 Milk +20 M&G +43

118 **JP 8076 HARLAND 1231**
 Calved: Sep. 21, 2021 Tattoo: 1231 Reg. #44317441

| | | |
|---------------------|---------------------------|--------------------------|
| JP HARLAND 8076 | { JP Harland 4636 | { RCR 977 Harland ET |
| | { JP MS 753 Ribstone 3155 | { JP MS Silver Brit 5598 |
| | | { F 157K Ribstone 753 |
| | | { JP MS 3913 Dom 9481 |
| JP MS 8463 DOM 2127 | { JP Robin Domino 8463 | { KB Domino 424P |
| | { JP MS Golden 9495 | { JP Miss Mark 3731 |
| | | { JP Goldfinger 5538 |
| | | { JP 6017 Dominette 4263 |

•EPDs - BW +5.4 WW +55 YW +94 Milk +25 M&G +52

119 **JP 8076 HARLAND 1232**
 Calved: Sep. 21, 2021 Tattoo: 1232 Reg. #44317598

| | | |
|---------------------|---------------------------|--------------------------|
| JP HARLAND 8076 | { JP Harland 4636 | { RCR 977 Harland ET |
| | { JP MS 753 Ribstone 3155 | { JP MS Silver Brit 5568 |
| | | { F 157K Ribstone 753 |
| | | { JP MS 3913 Dom 9481 |
| JP MS 8658 DOM 6107 | { JP Mister Domino 8658 | { KB Mister Domino 412P |
| | { JP MS Gold Dom 1561 | { JP Star Dominette 4307 |
| | | { JP Goldfinger 5638 |
| | | { JP AA Dominette 3861 |

•EPDs - BW +3.4 WW +52 YW +86 Milk +16 M&G +42



JP 6306 DOM 1233

120

Calved: Sep. 21, 2021 Tattoo: 1233 Reg. #44317475

| | | | | |
|------------------------|---|--------------------------|---|--------------------------|
| JP 334 DOM 6306 | { | JSS Domino 334 | { | CL 1 Domino 955W |
| | | JP MS Harland 4561 | { | H Lady Rancher 9040 |
| JP MS 3063 DOMINO 6049 | { | H Domino 3063 ET | { | RCR 977 Harland ET |
| | | JP MS 5753 Ribstone 3112 | { | JP MS 412P Dom 7730 |
| | | | { | CL 1 Domino 955W |
| | | | { | HH Miss Advance 5139R ET |
| | | | { | F 157K Ribstone 753 |
| | | | { | JP MS Aurum Dom 6869 |

•EPDs - BW -0.1 WW +48 YW +83 Milk +24 M&G +48

121

JP 6306 DOM 1235

Calved: Sep. 23, 2021 Tattoo: 1235 Reg. #44317595

| | | | | |
|------------------------|---|--------------------|---|--------------------------|
| JP 334 DOM 6306 | { | JSS Domino 334 | { | CL 1 Domino 955W |
| | | JP MS Harland 4561 | { | H Lady Rancher 9040 |
| JP MS 3063 Domino 8210 | { | H Domino 3063 ET | { | RCR 977 Harland ET |
| | | JP MS Golden 0346 | { | JP MS 412P Dom 7730 |
| | | | { | CL 1 Domino 955W |
| | | | { | HH Miss Advance 5139R ET |
| | | | { | JP Goldfinger 5538 |
| | | | { | JP Miss Luke 5553 |

•EPDs - BW +2.5 WW +53 YW +89 Milk +27 M&G +54

122

JP 703 ADVANCE 1236

Calved: Sep. 27, 2021 Tattoo: 1236 Reg. #44317601

| | | | | |
|------------------------|---|---------------------|---|--------------------------|
| MCC ADVANCE 703 | { | HH Advance 4075B ET | { | HH Advance 1013Y ET |
| | | H Tiffany 3035 ET | { | HH Miss Advance 0121X |
| JP MS 3063 DOMINO 8220 | { | H Domino 3063 ET | { | H Payback 807 |
| | | JP MS 8712 Dom 3116 | { | HH Miss Advance 5139R ET |
| | | | { | CL 1 Domino 955W |
| | | | { | HH Miss Advance 5139R ET |
| | | | { | JP Mark Domino 8712 |
| | | | { | JP MS Robin Dom 0322 |

•EPDs - BW +1.6 WW +44 YW +72 Milk +21 M&G +43

123

JP 8076 HARLAND 1237

Calved: Sep. 27, 2021 Tattoo: 1237 Reg. #44317454

| | | | | |
|-------------------------|---|-------------------------|-----------------------------|------------------------------|
| JP HARLAND 8076 | { | JP Harland 4636 | { | RCR 977 Harland ET |
| | | JP MS 753 Ribstone 3155 | { | JP MS Silver Brit 5598 |
| JP MS HARLAND GOLD 5021 | { | | RCR 3027 Gold Harland 12020 | { |
| | | JP MS 9166 Harley 3190 | { | JP MS 3913 Dom 9481 |
| | | | { | UPS Domino 3027 |
| | | | { | RCR 986 Miss Gold Harland ET |
| | | | { | UU Harley 9166 |
| | | | { | JP MS Mark Dom 9461 |

•EPDs - BW +3.5 WW +56 YW +95 Milk +20 M&G +48

Thank you for attending

POWELL HEREFORDS

25TH ANNUAL PRODUCTION SALE

BUILDING BETTER BEEF



WITH POWELL HEREFORD GENETICS.

JAMES L. POWELL
LORRIE & ARTHUR UHL
VICTORIA & KEN JOHNSON
JAMES UHL
DAVID NEAL
BRITT MYNATT

*We look forward to seeing you
again for our 2023 sale.*

